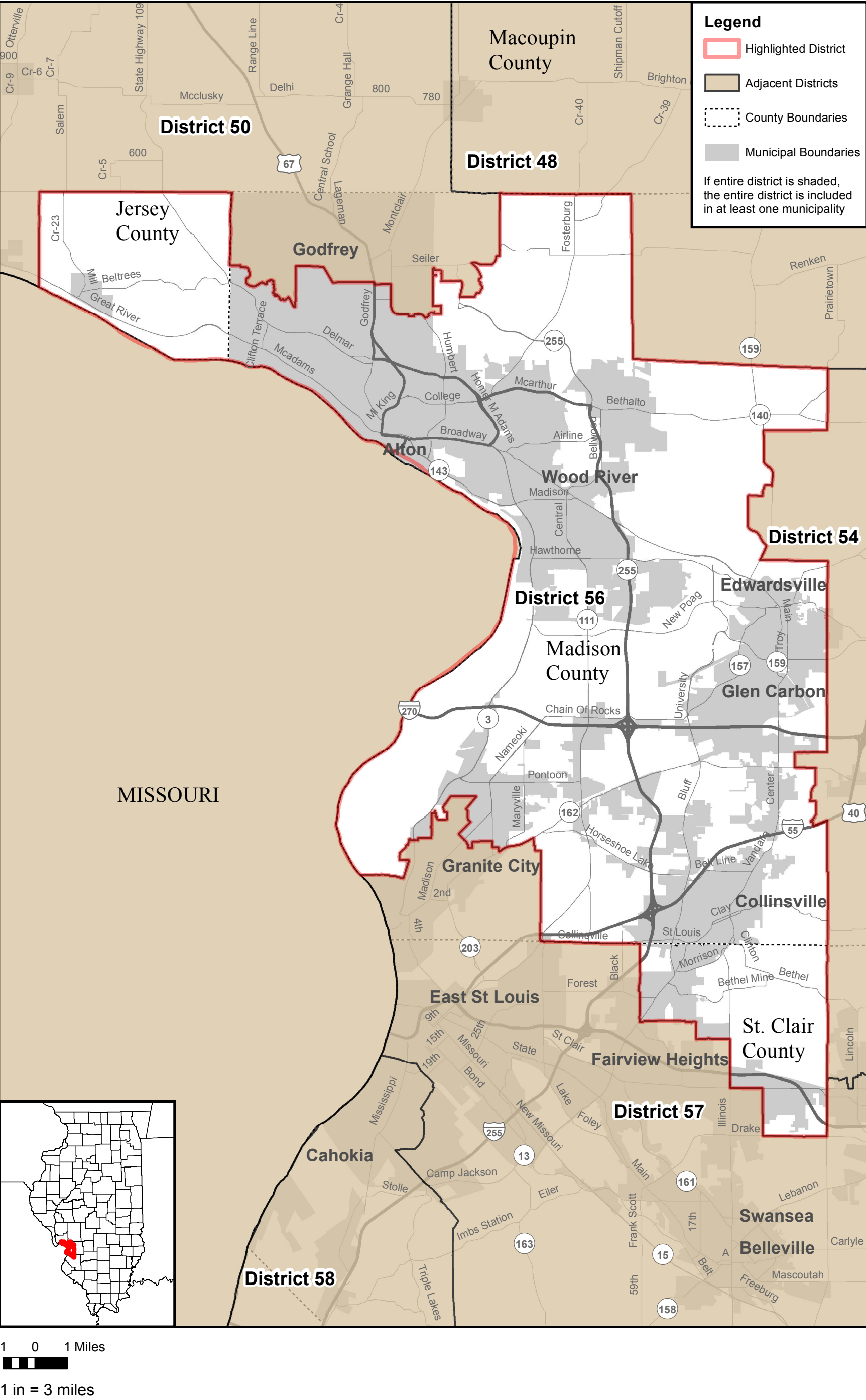


Illinois Senate District 56



Senate District 56

(partially within Jersey, St. Clair and Madison Counties)

Senate District 56 shall include that part of Illinois

beginning at the northwest corner Elsay Twp in Jersey County,

thence east along the Elsay / Otter Creek Twp border, and continuing east along the Elsay / Mississippi Twp border to the Madison County border,

thence south along the Madison / Jersey County border to a point approximately 400 feet north of the north border of Section 19, T6N, R10W (3rd principal meridian),

thence east for approximately 1500 feet to Piasa Creek,

thence southeast along Piasa Creek to Rocky Fork,

thence east, south, east and north along Rocky Fork to the southeast corner of Section 20, T6N, R10W (3rd principal meridian),

thence north along the east border of Section 20, T6N, R10W (3rd principal meridian) to the northeast corner of Section 20, T6N, R10W (3rd principal meridian),

thence east along the north border of Section 21, T6N, R10W (3rd principal meridian) to Pierce Ln,

thence southeast along Pierce Ln to Winter Ln,

thence east along Winter Ln to US 67,

thence south along US 67 to Pearl St,

thence east along Pearl St to Humbert Rd,

thence south and east along Humbert Rd to Storyland Dr,

thence south along Storyland Dr to Candy Ln,

thence east along Candy Ln to Cinderella Dr,

thence north along Cinderella Dr to Humbert Rd,

thence east along Humbert Rd to Richland Woods Dr,

thence northeast along Richland Woods Dr to Valley View Dr,

thence southwest to the SW corner of NW ¼ Section 30 T6N, R9W (3rd principal meridian),

thence east along the south border of NW ¼ Section 30 T6N, R9W (3rd principal meridian), to the Foster Twp border,

thence north, west and north along the Foster / Godfrey Twp border to the northwest corner of Foster Twp,

thence continuing east and south along the Foster / Godfrey Twp border to Seminary Rd,

thence south along Seminary Rd to Bockstruck Rd,

thence east along Bockstruck Rd to Tra-Lin Ridge,

thence northeast along Tra-Lin Ridge and Tra-Lin Ridge (extended) to West Fork Wood River,

thence north along West Fork Wood River to Seiler Rd,

thence east, northeast and north along Seiler Rd to the east border of Section 17 T6N, R9W (3rd principal meridian),

thence north along the east border of Section 17 T6N, R9W (3rd principal meridian), and continuing north along the east border of Sections 8 and 5, T6N, R9W (3rd principal meridian) to the Macoupin County border,

thence east along the Macoupin / Madison County border to the northeast corner of Foster Twp,

thence south along the Foster / Moro Twp border to the southwest corner of Moro Twp,

thence east along the Moro / Ft. Russell Twp border to the northeast corner of Ft. Russell Twp,

thence south along the Ft. Russell / Hamel Twp border to the southeast corner of Section 12, T5N, R8W (3rd principal meridian),

thence west along the south borders of Sections 12, and 11 of T5N, R8W (3rd principal meridian) to N IL 159,
 thence south along N IL 159 to the terminus of Miller Dr / N IL 159,
 thence north for approximately 225 feet,
 thence west for approximately 1300 feet to Burrough's Branch,
 thence south along Burrough's Branch to Miller Dr,
 thence west along Miller Dr to Springfield Dr,
 thence south and southeast along Springfield Dr to N IL 159,
 thence south along N IL 159 to the Edwardsville Twp border,
 thence east along the Edwardsville / Ft. Russell Twp border to the northeast corner of Edwardsville Twp,
 thence south along the Edwardsville / Pin Oak Twp border to Marine Rd,
 thence southwest along Ellsworth St to McCoy Dr,
 thence southeast along McCoy Dr to Alexander Dr,
 thence southwest along Alexander Dr for approximately 360 feet,
 thence southeast to the Edwardsville / Pin Oak Twp border,
 thence south along the Edwardsville / Pin Oak Twp border to the southeast corner of Edwardsville Twp,
 thence west along the Edwardsville / Collinsville Twp border to the northwest corner of Section 1, T3N, R8W (3rd principal meridian),
 thence south along the west border of Section 1, T3N, R8W (3rd principal meridian) to Historic National Rd,
 thence east along Historic National Rd to Lakeview Acres Rd,
 thence south along Lakeview Acres Rd to a point approximately 160 feet south of E. Main St,
 thence east for approximately 975 feet,
 thence south for approximately 2200 feet to Canteen Creek,
 thence southwest along Canteen Creek to the southwest corner of NW ¼ NE ¼ Section of Section 13, T3N, R8W (3rd principal meridian),
 thence east for approximately 330 feet along the south border of NW ¼ NE ¼ Section of Section 13, T3N, R8W (3rd principal meridian),
 thence south for approximately 550 feet to I-55,
 thence northeast along I-55 to the Jarvis Twp border,
 thence south along the Jarvis / Collinsville Twp border, and continuing south along the Caseyville / O'Fallon Twp border to the southeast corner of Caseyville Twp,
 thence west along the Caseyville / St. Clair Twp border to Old Collinsville Rd,
 thence north along Old Collinsville Rd to W US 50 (Lincoln Hwy),
 thence west along Lincoln Hwy to N Illinois St,
 thence north along N Illinois St to the southeast corner of Section 16, T2N, R8W (3rd principal meridian),
 thence west along the south border of Section 16, T2N, R8W (3rd principal meridian) to the west border of Section 16, T2N, R8W (3rd principal meridian),
 thence north along the west border of Section 16, T2N, R8W (3rd principal meridian) to Little Canteen Creek,
 thence west along Little Canteen Creek for approximately 2200 feet,
 thence west for approximately 1.4 miles to the Caseyville Twp border,
 thence north along the Caseyville / Canteen Twp border to the Madison County border,
 thence west along the Madison / St. Clair County border to the southeast corner of Section 33, T3N, R9W (3rd principal meridian),
 thence north along the east borders of Sections 33, 28, and 21, T3N, R9W (3rd principal meridian) to the northeast corner of Section 21, T3N, R9W (3rd principal meridian),
 thence west for approximately 1300 feet to the Granite City Twp border,

thence north along the Granite City / Nameoki Twp border to Edwardsville Rd,
 thence southwest along Edwardsville Rd to Charles St,
 thence north along Charles St to E. 23rd St,
 thence west along E. 23rd St to Nameoki Rd,
 thence north along Nameoki Rd to Edwards St,
 thence west along Edwards St to Hall Av,
 thence south along Hall Av to E. 23rd St,
 thence west along E. 23rd St to a point approximately 230 feet west of Bromley Av,
 thence north for approximately 440 feet,
 thence northwest for approximately 300 feet to E. 24th St and Veterans Pkwy,
 thence northwest along the northbound side of Veterans Pkwy to Delmar Av,
 thence northeast along Delmar Av to 27th St,
 thence northwest along 27th St to Benton St,
 thence northeast along Benton St to 27th St,
 thence northwest along 27th St to Michigan Av,
 thence north along Michigan Av to the intersection of Wilson Park Ln and St. James St,
 thence northwest approximately 440 feet to the Union Pacific Rail line,
 thence northeast along the Union Pacific rail line for approximately 2670 feet,
 thence west for approximately 4300 feet,
 thence southwest for approximately 1800 feet to the Granite City Twp border,
 thence south southeast for approximately 925 feet,
 thence east for approximately 440 feet,
 thence south for approximately 1170 feet,
 thence west for approximately 1670 feet,
 thence north for approximately 385 feet,
 thence west for approximately 220 feet,
 thence north for approximately 350 feet,
 thence east for approximately 90 feet,
 thence north for approximately 230 feet to North St,
 thence west along North St for approximately 160 feet,
 thence north for approximately 390 feet,
 thence west for approximately 100 feet,
 thence south for approximately 390 feet to North St,
 thence west along North St for approximately 530 feet,
 thence south along Bryan Av (extended) and Bryan Av to W. 24th St,
 thence west along W. 24th St to Bryan Av,
 thence south along Bryan Av to W. 23rd St,
 thence east along W. 23rd St to Bryan Av,
 thence south along Bryan Av to W. 20th St,
 thence west along W. 20th St to Spruce St,
 thence south along Spruce St for approximately 350 feet,
 thence west for approximately 1180 feet,
 thence north for approximately 200 feet,
 thence west northwest for approximately 260 feet,
 thence south southwest for approximately 1000 feet,
 thence west for approximately 270 feet,
 thence south for approximately 450 feet,
 thence southwest for approximately 1350 feet,

thence southeast for approximately 90 feet,
thence south southwest for approximately 530 feet to Fisher Ct,
thence south for approximately 680 feet to the intersection of C St and 7th St,
thence east along C St to 3rd St,
thence south along 3rd St to a point approximately 120 feet south of E St,
thence west northwest for approximately 1280 feet parallel to E St,
thence continuing west for approximately 5660 feet to the Illinois / Missouri border,
thence north along the Illinois / Missouri border to the southwest corner of Elsay Twp in Jersey County,
thence north along the Elsay / Quarry Twp border to the point of beginning.