

February 2011



Edwardsville | Glen Carbon Chamber of Commerce

It's everyone's business.

Common Ground



PRST STD
U.S. POSTAGE
PAID
EDWARDSVILLE, IL
PERMIT # 29

connect

2011 Executive Directors

Marc Voegelé, President
Express Employment Professionals
Skip Sponeman, First Vice President
Wal-Mart
Paul Millard, Second Vice President
TheBANK of Edwardsville
Emily Gates, Third Vice President
Children's Home + Aid Society
Jay Blanquart, Past President
Blanquart Jewelers & Corp. Gifts
Josh Lowe, Treasurer
West & Company

2011 Directors

Mike Marshall
Anderson Hospital
Lelan Olsen
Olsen Veterinary Clinic
Pat Slaughter
Fitness 4 Life Physical Therapy
Len Scaturro
Crushed Grapes, Ltd.
Todd Sivia
Sivia Business & Legal Services, PC
Mark Richardson
MML Investors
Joan Frey
Miss Bailey's Poppy Patch
David Toby
FCB Edwardsville Bank
Gary Hoggatt, Jr.
National Bank
Danelle Brown
Marcel Brown Technology Services
Kelly Wagner
First Clover Leaf Bank
Elizabeth Heil
The Scheffel Companies
Cathy Hamilton
BARBERMurphy Group

Ex-Officio

Robert Jackstadt, Mayor
Village of Glen Carbon
Gary Niebur, Mayor
City of Edwardsville
Ed Hightower, Superintendent
Edwardsville School District #7

Chamber Staff

Desirée Bennyhoff
Communications Director
dbennyhoff@edglenchamber.com

Linda Daniels
Membership/Board Relations
ldaniels@edglenchamber.com

Bonnie Kotsybar
Greeter Service & Events Coordinator
bkotsybar@edglenchamber.com

Gloria Pugh
Accounts Payable & Receivable
gpugh@edglenchamber.com

Contributors

Desirée Bennyhoff
Editor, Layout & Design, Contributing Writer

Hannah Buehler
Communications Intern

Scott Evers
Contributing Photographer
(large Wildey cover photo)

**Marci Winters-McLaughlin
& Rachael Wilbur**
The Edwardsville Intelligencer
Photo Contributors

Mission Statement

Through commitment and involvement of its members, the Edwardsville/Glen Carbon Chamber of Commerce provides leadership for the benefit of the business community by promoting economic opportunities, advocating in the interests of business, providing members with education and resources, and encouraging mutual support.

Common Ground

200 University Park Drive, Suite 260
Edwardsville, Illinois 62025

Phone: (618) 656-7600

Fax: (618) 656-7611

www.edglenchamber.com

on the cover

The Wildey Theatre

The Wildey Theatre opened in 1909 in downtown Edwardsville as a grand Opera House named after the founder of the Independent Order of Odd Fellows which led the construction effort. It was reinvented in 1937 with an art deco look as a movie house capable of live performances. With the introduction of home movies, the Wildey hobbled along the late 70s and early 80s until 1984 when it closed as a full-time movie theater.

The Wildey was finally started on its path toward renovation in 1999, when Senator Evelyn Bowles secured a State grant for the City of Edwardsville to purchase the building and install a new roof to keep the water out. During the past 12 years, the City maintained an unwavering resolve to find the right mix to fund the current renovation. Finally, in October of 2009, the City Council unanimously approved the renovation citing a variety of sources for funding that included a mix of private and public funds.

Once renovated, the Wildey will operate as Edwardsville's primary cultural center, presenting a wide array of family programming to appeal to the entire community. In addition to live performances, the Wildey will offer classic films, art films, travel films, and children's films and present highly acclaimed second run films that would not otherwise be shown in Edwardsville. The Wildey is not meant to compete with the large movie-plexes by showing first run films. Instead, seeing a film at the Wildey will be much like it was in the 1940s and 1950s. The "movie palace experience" will be the attraction that sets the Wildey Theatre apart from other film presentations in the region. Instead, patrons will find a performance that includes news reels, cartoons, historic trailers, and period music played before and after each performance.

Programming at the Wildey will draw people from the surrounding region as will the opportunity to tour the theatre and learn about its history. Visitors will witness firsthand the "golden age" of movies through guided tours of the Wildey, short presentations of vintage film clips, and a virtual museum display in the lobby showcasing the facility's history.

The Wildey will reopen in Spring 2011 and will be what Rich Walker, Chair of the Wildey Development Committee, called "a sparkling jewel on Main Street that all of Southwest Illinois will enjoy."

For programming information, rentals, tours, or questions, please contact Rich Walker at rwalker@siue.edu or Katie Grabel at kgrable@cityofedwardsville.com.

2011 Advertising Rates:

	Monthly Rate	Color Charge
1/8 Page	\$32	\$7
1/4 Page	\$65	\$10
1/2 Page	\$110	\$15
Full Page	\$210	\$20
Back Page	\$310	Included

Book One Year of Advertising in Common Ground and Receive a 15% Discount.

Call 618.656.7600 for details.

special investors

Gold Level

Anderson Hospital
Wal-Mart

Silver Level

AmerenIP
AT&T
Gateway Regional Medical Center
Hortica
Meridian Village
TheBANK of Edwardsville

Bronze Level

Associated Bank
Best Buy
Cassens & Sons
Cassens Transport
Charter Business
City of Edwardsville
Commerce Bank
Doubletree Hotel Collinsville
Eden Village Retirement Community
Edwardsville School District #7
Edwardsville Publishing Company
First Clover Leaf Bank
Hurford Architects, Inc.
Juneau Associates, Inc., PC.
Madison Mutual Insurance Co.
Richards Brick Company
Royal Office Products, Inc.
Royal Solutions, LLC
R.P. Lumber
Shop 'N' Save
Southern Illinois University Edwardsville
West & Company, LLC
Village of Glen Carbon

Premier Level

'62 Sports Group
Abstracts & Titles Inc.
American Family Insurance
Answer Direct
Ashley Furniture Home Store
Associated Physicians Group
Assurance Brokers
B & R Cleaning
Bard & Didriksen Pediatrics
Bauer-Hite Orthodontic
Baugher Financial & Assoc. Inc.
Bella Milano Restaurant
Brickman Orthodontics
Bull and Bear Grill & Bar
Caulk's Collision
Chicago Title Insurance
Coffey & McCracken Law Firm P.C.
Coldwell Banker Brown Realtors
Comfort Inn
Computer Rescue
Country Club Lawn & Tree
COUNTRY Financial
Country Hearth Inn & Suites
Crawford, Murphy, & Tilly, Inc.
Culver's of Edwardsville
Days Inn
Denny's
DRDA Electric Company
Eberhart Sign & Lighting Co.
Edwardsville Pet Hospital
El Maguey
Farmers Insurance District 61
Fazoli's
FCB Edwardsville Bank
First Bank
First Mid-Illinois Bank & Trust
First National Bank - Maryville
Fitness 4 Life Physical Therapy
Fountain View Manor
Gateway Center
Gateway Grizzlies
Gerold Moving
Glik's Department Store
Grace Manor
Hampton Inn & Suites
Hawkins Law Office
Hawthorne Animal Hospital
Holiday Inn Express
Illinois Dept. of Employment Security
Imaging Center of Southern Illinois
IMO'S Pizza
Jan's Hallmark Shop
J.F. Electric Inc.
Joe's Pizza & Pasta
Kentucky Fried Chicken
Kitchenland
Kurt's Carstar Collision Center
Lindenwood University
Logo It @ Langa
Magnuson Camelot Hotel
Market Basket
Maryville Women's Center & Med Spa
Masterpiece Smiles - Dr. Noll
Mastroianni Orthodontics
Meridian View Family Dental
Midwest Occupational Medicine
Minuteman Press
Neruda
Network Specialists
Office Depot
Piedmont Development Corp.
ProSource Wholesale Floorcoverings
Red Robin
RED'z Rib Shack
Reed, Armstrong, Gorman, Mudge & Morrissey
RE/MAX Integrity Realty Centre
Regions Bank
Sandberg, Phoenix & von Gontard
Schnucks
Scott Credit Union
Shell Community Federal Credit Union
Shoe Carnival
Southern Illinois Underwriters
Specialty Printing
Stahly Cartage Co.
Sunset Hills Country Club
Sunset Hills Family Dental
Super 8 Pontoon Beach
TheEDGEBANK
The Cup
The Scheffel Companies
Thouvenot, Wade & Moerchen Inc.
Tiger Plumbing
University Nursing & Rehabilitation
US Bank
USO of Missouri
Wenzel & Associates

events

2/11 Friday 12-1pm
networking@noon
hosted by Montessori Glen-Ed
at Bella Milano
1063 South IL Route 157
Edwardsville, IL 62025

2/17 Thursday 5-7pm
Business After Hours
Meridian Village
27 Auerbach Place
Glen Carbon, IL 62034

2/22 Tuesday 11am-1pm
Professional Education
QuickBooks: Building
Powerful Reports for
Managing Your Business
Lewis and Clark Community
College N.O. Nelson Campus
Room N4 110
Edwardsville, IL 62025

2/22 Tuesday 12-1pm
YPG Networking Lunch
Location TBD

2/24 Thursday 4pm
Ground Breaking
Scott Credit Union
Edwardsville Corporate Center
(off 143 near Hortica)
Edwardsville, IL 62025

save the date

3/3 Thursday 5-7pm
Business After Hours
Prudential One Realty Centre
Season's Village at
Whitworth Drive & Bouse Road
Glen Carbon, IL 62034

3/12 Saturday 5:30pm
Annual Community
Awards & Auction Dinner
SIUE Meridian Ballroom
Edwardsville, IL 62025

3/17 Thursday 5-7pm
Business After Hours
First Clover Leaf Bank
6814 Goshen Road
Edwardsville, IL 62025

3/29 Tuesday 11am-1pm
Professional Education
Writing Effective Emails
Lewis and Clark Community
College N.O. Nelson Campus
Room N4 110
Edwardsville, IL 62025

3/31 Thursday 5-7pm
Business After Hours
Bella Milano at N.O. Nelson
Lewis and Clark Community
College's N.O. Nelson Campus
600 Troy Road
Edwardsville, IL 62025

4/5 Tuesday 7:30-9am
YPG Learn from
a Leader Breakfast
Location & Speaker TBD

4/14 Thursday 5-7pm
Business After Hours
Sunset Hill Memorial Estates
50 Fountain Drive
Glen Carbon, IL 62034

4/26 Tuesday 11am-1pm
Professional Education
Excel Formulas & Functions
Lewis and Clark Community
College N.O. Nelson Campus
Room N4 110
Edwardsville, IL 62025

4/28 Thursday 5-7pm
Business After Hours
Eden Village
400 South Station Road
Glen Carbon, IL 62034

connect

business after hours schedule

The purpose of a networking mixer is to meet new people, make new contacts, promote your business, and talk with other business people facing the same challenges as you. All are welcomed and invited to attend. Hors d'oeuvres and beverages are provided. A business card raffle and 50/50 drawing will occur at approximately 6pm. Entry fee is \$5 for Chamber members and \$15 for non-members. This is an excellent networking opportunity!

2/17 Thursday 5-7pm

Meridian Village
27 Auerbach Place in Glen Carbon

3/3 Thursday 5-7pm

Prudential One Realty Centre
Season's Village at Whitworth Drive
& Bouse Road in Glen Carbon

networking@noon schedule

Can't make a Business After Hours? networking@noon is a great way to meet other business people in a smaller group setting without taking time away from your busy day. This fun, fast-paced, members-only "speed networking" event is designed to get you in, fed, connected, and on your way in 60 minutes or less.

2/11 Friday noon

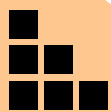
hosted by Montessori Glen-Ed
at Bella Milano in Edwardsville
1063 South IL Route 157



CHEST PAIN CENTER

When every second counts...

- **Pre-hospital, 12-Lead EKG testing**
*with participating ambulance services
- **Care that's streamlined and specialized for patients with chest pain**
- **Improved patient outcomes**
- **Only Center of its kind in Madison County**



Anderson Hospital

www.andersonhospital.org

Maryville, Illinois 618-288-5711

the newly connected

Edwardsville Online

Diane Villhard
Community Web Site, Directory,
Bulletin Board, Calendar,
Newsletter, Coupons, Deals & Ads
6 Ginger Wood Estates
Glen Carbon, IL 62034
618.531.6172
www.EdwardsvilleOnline.com

Olive Oils & More

Mary Burke
Food Specialty Store Selling
Olive Oils & Balsamic Vinegars
1063 South IL Route 157, Unit 6
Edwardsville, IL 62025
618.656.4645
www.oliveoilstoreandmore.com

Papa Murphy's Take 'N' Bake Pizza

Katie Neal
Made-To-Order Take-N-Bake Pizza
207 Harvard Drive
Edwardsville, IL 62025
618.656.7272
www.papamurphys.com

All your protection under one roof.

**AMERICAN FAMILY
INSURANCE**

Kathleen M Goclan Agency
An Outstanding Customer Experience
J.D. Power and Associates certified
Distinguished Insurance Agency
(618) 659-2483



American Family Mutual Insurance Company and its Subsidiaries
American Family Insurance Company
Home Office — Madison, WI 53783
amfam.com

© 2009 07497 — Rev. 2/09

**STRENGTH
& STABILITY**



Since 1959

**618 650 3760
siuecu.org**



ed-glen families

An online community resource for families in the greater Edwardsville-Glen Carbon area.

Get Connected with Families

- Online advertisements starting at \$119/month
- Business Resource Listings ONLY \$99/year
- Online Coupons ONLY \$49/year
- E-newsletter Sponsorship \$75/month
- E-newsletter Advertisements \$49/month
- E-newsletter Coupons ONLY \$25/month
- Trivia Raffle Sponsorship \$50/week plus cost of prizes

PO Box 331, Edwardsville, IL 62025 618.967.7070

advertising@edglenfamilies.org

www.edglenfamilies.org

**What are families saying
about ed-glen families?**

*"When did this awesome
website start up and who's
brainchild is it?"*

"Love the website!"

*"I swear I wouldn't know what
is going on in Edwardsville if it
wasn't for your site. You are
really doing the community a
great service, a very important
service! Thank you so much!"*

Feature Presentation

Edwardsville/Glen Carbon Chamber of Commerce
Annual Community Awards Dinner Auction

Saturday, March 12, 2011

Morris University Center Meridian Ballroom
Southern Illinois University Edwardsville

5:30pm – Social Hour & Silent Auction

7:00pm – Dinner & Welcome

8:30pm – Awards Program

2011

Annual Community Awards Dinner Auction

All Sponsors Receive:

Listing in Annual Dinner Program
Recognition in *Common Ground*
Recognition on Chamber Web Site

*Please call the Chamber office at
618.656.7600 to donate an auction item
and to secure your sponsorship.*

edglen
Chamber of Commerce

SPONSORSHIP OPPORTUNITIES

Oscar Sponsor: \$1,500

Limited to Three (3) Non-Competing Organizations
One reserved table for eight (8) in Premier location
Company provided with copy of attendee list
Company recognized from the podium & in PowerPoint presentation
Full page color ad in Annual Dinner Program & in Chamber newsletter

Golden Globe Sponsor: \$1,000

Limited to Five (5) Non-Competing Organizations
Six (6) complimentary tickets to attend Annual Dinner & Auction
Company provided with copy of attendee list
Company recognized from the podium & in PowerPoint presentation
Half page color ad in Annual Dinner Program & in Chamber newsletter

Emmy Sponsor: \$500

Four (4) complimentary tickets to attend Annual Dinner & Auction
Company provided with copy of attendee list
Recognition in PowerPoint presentation & Annual Dinner Program
Quarter page color ad in Annual Dinner Program & in Chamber newsletter

Tony Sponsor: \$250

Two (2) complimentary tickets to attend Annual Dinner & Auction
Recognition in Annual Dinner Program
Eighth page color ad in Annual Dinner Program & in Chamber newsletter

Grammy Sponsor: \$100

Recognition in Annual Dinner Program

YPG Spotlight: Katie Bennett

Written By: Hannah Buehler, Communications Intern

Katie Bennett grew up in Fairfield, IL. She graduated from SIUE in 2003 with a bachelors in mass communications. Katie will be graduating in May of this year with her masters in public administration.

Katie has many hobbies that she enjoys including painting, cooking, reading and spending time with family and friends. Her favorite sports teams are of course the SIUE Cougars, and the Cardinals.

For almost four years, Katie has been the Assistant Director of Alumni Affairs at SIUE. Katie loved her undergraduate experience at SIUE. When the job position became available, Katie jumped at the opportunity to come back. In her current position, Katie has the opportunity to work with current students and alumni through the student alumni association.

Katie admires business leader Bev George. She had the pleasure of getting to know Bev through the SIUE Alumni association Board of Directors. Katie respects Bev's support for the University and Community, and notes that she is an individual with the perfect mix between professionalism and fun!

When Katie moved back to Edwardsville, she knew she needed to become reacquainted with the Edwardsville community, thus she turned to the

Chamber. She wanted to build her professional network, but was often nervous about networking with high level business owners at Chamber events. Katie heard about the Young Professionals Group and jumped on board. The YPG has provided an outlet for Katie to meet and network with individuals at the same professional and personal stage in life.



Katie would like to see the YPG become more involved in philanthropic activities within the community. She believes that although we cannot always donate monetarily, we can award our time and talents to our community.

Katie is a member of Edwardsville Rotary. She also serves on the marketing committee for the Watershed Nature Center, and on the planning committee for the Taste of Edwardsville for Edwardsville Neighbors in Need.

Katie was honored as 2010 Young Professional of the Year at the Chamber's 1st Annual Membership Meeting & Luncheon in January.

upcoming YPG events

2/22 Tuesday 12-1pm
YPG Networking Lunch
Location TBD

edoglen ypg
Young Professionals Group

ALBERT CASSENS AWARD for OUTSTANDING COMMUNITY ACHIEVEMENT

Nomination Form

The **Albert Cassens Award for Outstanding Community Achievement** is presented to an individual who has made a significant impact on the community during the 2010 calendar year.

Nominee's Name : _____

Title : _____ **Company :** _____

Business Address: _____

City, State, Zip : _____

Business Phone: _____ **Home/Cell Phone:** _____

Nominator's Name: _____ **Title :** _____

Company: _____ **Phone:** _____

Alt Phone: _____

On a separate piece of paper, please provide specific examples of how the nominee has met following criteria:

1. The nominee must:
 - a. have given freely of his/her time to the community. A government official may be considered, but his/her contributions must have been made outside of his/her normal work functions or governing responsibilities.
 - b. have made a significant impact on the community during the 2010 calendar year, but not to the exclusion of contributing efforts made during prior year. Nominations that are based on lifetime achievement are not considered.
 - c. be an active, upstanding citizen.
2. The nominee must reside or have primary involvement in a business or an organization within the boundaries of the Edwardsville Community District #7.
3. The nominee does not have to be a member of the Edwardsville/Glen Carbon Chamber of Commerce.

Please return this completed form, along with attachments, to the Chamber of Commerce at the address below or fax to 656-7611 before the **deadline of February 14, 2011**.

Edwardsville/Glen Carbon Chamber of Commerce

200 University Park Drive, Suite 260
Edwardsville, Illinois 62025
(618) 656-7600 · (618) 656-7611 FAX

LIFETIME ACHIEVEMENT AWARD

Nomination Form

The **Lifetime Achievement Award** is presented to an exceptional individual who has made a significant positive impact on the Edwardsville/Glen Carbon community through his or her past achievements during a long period of time and has enhanced the quality of life for Edwardsville/Glen Carbon residents.

Nominee's Name: _____

Title: _____ **Company:** _____

Business Address: _____

City, State, Zip: _____

Business Phone: _____ **Home/Cell Phone:** _____

Nominator's Name: _____ **Title:** _____

Company: _____ **Phone:** _____

Alt Phone: _____

Criteria:

- Nominee must live or work in our community or geographic area.
- Nominee **must** be a member of the Edwardsville/Glen Carbon Chamber of Commerce.
- Nominee must have demonstrated an ongoing commitment to community involvement. A one-time project will be considered, but those individuals demonstrating an ongoing commitment to the business community will be given higher priority.
- Activities of a business-oriented nature will have priority over non-business-related activities.
- Volunteer activities will be considered more favorably than performance of activities required by the nominee's job.

Selection Procedure:

- Selection committee will award one recipient from those nominated. The selection committee and/or the Chamber Board of Directors reserves the right to nominate additional individuals and/or expand the nomination process in the event that an adequate pool of nominations has not been received. Nominations shall be confidential; only the recipient will be announced and publicized.
- Nominations are accepted from anyone. Self-nominations accepted and encouraged.

Supporting Documentation:

On as many pages as necessary, please include the following documentation:

- Business-Related Activities
- Community Involvement
- Statement of Qualifications

Please return this completed form, along with attachments, to the Chamber of Commerce at the address below or fax to 656-7611 before the **deadline of February 14, 2011.**

Edwardsville/Glen Carbon Chamber of Commerce

200 University Park Drive, Suite 260
Edwardsville, Illinois 62025
(618) 656-7600 • (618) 656-7611 FAX

TALLERICO LEADERSHIP AWARD

Nomination Form

The **Tallerico Leadership Award** is presented to an outstanding individual who has achieved excellence in his/her business or profession, has served the community in a meaningful way, and has assisted women in reaching their full leadership potential.

Nominee's Name: _____

Title: _____ **Company:** _____

Business Address: _____

City, State, Zip: _____

Business Phone: _____ **Home/Cell Phone:** _____

Nominator's Name: _____ **Title:** _____

Company: _____ **Phone:** _____

Important - a nominee must:

- be an exceptional individual who has achieved excellence in his/her business or profession.
- have given freely of his/her time to the community.
- have assisted women in reaching their full leadership potential.
- reside/have primary involvement in a business organization located within Ed. CSD #7.
- The nominee does *not* have to be a member of the Ed/Glen Chamber.

On a separate piece of paper, please describe how the nominee has achieved the following criteria:

1. **Assists Women in Reaching their Full Leadership Potential.** Provide specific examples of how the nominee has demonstrated support for the advancement and leadership development of business and professional women.
2. **Business Accomplishments.** List special recognition, projects and achievements. Include business-related affiliations, directorships, trusteeships or other designations.
3. **Community Service.** Describe local, county and state level participation, length of service and offices held in civic and service organizations, charitable activities, political pursuits, religious groups, chambers of commerce, or merchants associations.
4. **Other Memberships, Achievements, Awards, Publications.** Nominees may already have been honored for service to their profession, industry or community. They also may have publications to their credit or articles published supporting their service to their profession, industry or community. Please list awards and honors received which support this nomination.

Please return this completed form, along with attachments, to the Chamber of Commerce at the address below or fax to 656-7611 before the **deadline of February 14, 2011.**

Edwardsville/Glen Carbon Chamber of Commerce

200 University Park Drive, Suite 260
Edwardsville, Illinois 62025
(618) 656-7600 • (618) 656-7611 FAX

Business of the Month:



Written By: Hannah Buehler, Communications Intern

With original capital totaling only \$10,000 in 1868, TheBANK of Edwardsville was born. Founded by Edward M. West and his son in law Major William R. Prickett, TheBANK of Edwardsville opened January 1, 1868 on the corner of Main and Purcell Street. While many Edwardsville banks were failing during this time, TheBANK flourished, and by 1899 TheBANK merged with the Madison County State Bank.

Servicing the greater Edwardsville community since the 1800s, TheBANK has grown a highly respected reputation. The business and its employees are "The People You Know and Trust." TheBANK is dedicated to servicing the community, providing exceptional customer service and innovative products for customers growing needs. TheBANK offers diverse banking options for individuals and businesses.

Today, TheBANK has 20 locations throughout Madison and St. Clair County, and is one of the areas largest employers. TheBANK's assets total about \$1.45 billion. TheBANK's Main Banking Center is in downtown Edwardsville with other locations on Troy Road, Glen Carbon, in store at Shop-n-Save, on the campus of SIUE, and in neighboring communities.

TheBANK has built a strong reputation on being more than just a banking institution. Its diverse products and services as well as strong community involvement have made TheBANK a leading banking trendsetter among community banks across the country.

Strong community involvement includes having floats in parades to sponsorships, fundraisers and benefitting non-profit organizations. The Board of Directors as well as TheBANK's employees all donate time and efforts to a diverse group of civic organizations and clubs. Organizations that staff members have been involved in include: The Ed/Glen Chamber of Commerce, Rotary Club, Lions Club, Business and Professional Women, Hospice of Southern Illinois, United Way, Toys for Tots, March of Dimes, Big Brothers Big Sisters, and The American Heart Association.

Through its distinguished Community Scholarship Program, TheBANK of Edwardsville awards one select graduating high school senior with \$2,000 per four years in scholarship money. This student exhibits positive leadership and character through community involvement and academic accomplishment.



TheBANK of Edwardsville, 1925



TheBANK of Edwardsville, 2011

TheBANK of Edwardsville has been a Chamber member since 1954, and values its Chamber membership and benefits. Through the Chamber, TheBANK has been able to stay better connected with commercial banking customers in the area. TheBANK's membership has also been useful in networking and keeping up to date with the communities needs.

To learn more about TheBANK of Edwardsville, stop by the main branch office at 330 West Vandalia Street in Edwardsville, call 618.656.0057, or visit them online at www.4thebank.com.

ambassadors

Ambassador Spotlight: Rob Pickerell

Written By: Hannah Buehler, Communications Intern

Rob Pickerell grew up in Granite City and now lives in Maryville with his wife Jennifer and their two children Trevor, 6, and Kaitlyn, 2. He enjoys the healthy hobby of weight lifting in his free time.

Pickerell graduated with a B.A. in Organizational Communication from McKendree University and has been the Vice President Branch Sales Manager at Regions for the past eight years.



Rob has been in lending since graduating college, and was recruited to Regions by a former supervisor. He is an active member of the Goshen Rotary and committees within the United Way.

A Chamber member since 2010, Rob has enjoyed getting out in the community and participating in a vast variety of activities. Becoming an Ambassador was the next step for Rob.

As an Ed/Glen Chamber Ambassador, Rob aspires to encourage existing and future Chamber members to become more involved in the community. Rob believes people become Chamber members for two reasons: to meet people and grow their business. Rob encourages members to be proactive and utilize Chamber events and gatherings. "You will both achieve and exceed your expectations," said Pickerell.

2011 Ambassadors

Dave Viox, Chair
AAdvantage Insurance Group

Rachel Case, Co-Chair
First Clover Leaf Bank

Candice Arana
Hospice of Southern Illinois

Susan Bailey
National Bank

Natalie A. Head
Anderson Hospital

Ryan High
RE/MAX Preferred Partners

Allison Katt
Scott Credit Union

Dana Klassen
St. John's Community Care

Nicole Kline
Extra Help, Inc.

Bonnie Kotsybar
Chamber Staff

Linda Kuhlmann
Kuhlmann Business Services

Ryan Matthews
The Insurance Partnership

Mark Muckensturm
MRCT Benefits Plus

Rob Pickerell
Regions Bank

Jenny Robison
Shell Community Credit Union

Sara Sanderson
Liberty Mutual

Diana Voegelé
Express Employment Professionals

Zach Woods
Commerce Bank



Professional Accounting
We Make Accounting Easy for You

People in Business

CPA since 1997
618-334-8887
314-932-8192

www.peopleinbusinessinc.com

Board Spotlight: Cathy Hamilton

Written By: Hannah Buehler, Communications Intern

Cathy Hamilton grew up in O'Fallon, IL and received her undergraduate degree in Communications from Southern Illinois University Edwardsville. Cathy went on to receive her masters in Public Administration from SIUE.

When free time opens up, Cathy works on training for her first official run, and making preparations to renovate her home.

Throughout her career, Cathy has worked on expansion projects and economic development incentives for many communities throughout Illinois and Missouri. As a broker, Cathy works with economic development for profit. "It was an easy transition to move into the private sector with commercial real estate," said Hamilton. Cathy's work in commercial real estate has taught her that there are more efficient ways to do economic improvement as a local government.

Hamilton is a member of the Goshen Rotary and serves on the RiverBend Growth Association board of directors.

Cathy most admires business leader Mary Kane of Stifel Nicolaus. Cathy appreciates Mary's leadership within the community, and notes that she has learned a lot from Mary by watching her interact with people and clients. "She is a great example of a strong business woman and leader," said Hamilton.



Cathy joined the Chamber in 2008. Through the Chamber, Cathy has been able to become more actively involved in the business community. As board member, she wants to work closely with others in coming up with more programs that are useful to members and the community. She wants to strengthen the existing business programs such as Fallfest and Shop Chamber.

Hamilton's advice to chamber members is that you get out what you put in.

Focus on what your business does best...we'll do the rest!



Commercial Lenders seated are Brett Bruhn and John Dorsey
Standing are Don Engelke, Tim Whitten, Dave Gansner and Brian Ury

- Commercial Lending • Merchant Capture
- Health Savings Accounts • Business Checking



www.fnbstaunton.com

Member FDIC • Equal Housing Lender

Staunton 618-635-2234
Bethalto 618-377-9146
Holiday Shores 618-656-5015
Troy 618-667-9800
Livingston 618-637-2070
Worden 618-459-7211
Benld 217-8354384
Hamel 618-633-2265
Maryville 618-346-3600
Mt. Olive 217-999-2265

Cherry Hills Properties, Inc.

Locations in Edwardsville & Alton

- 2 & 3 Bedrooms
- Corporate Housing
- Garages Available
- Month-to-Month Leasing Options
- Pets Welcome
- Ask about our specials!



618-692-9310

www.rentchp.com



ASSURANCE BROKERS LTD.

Construction Bonds/Commercial Insurance
Life/Health/Auto/Home

Venessa van Schalkwyk
Licensed Insurance Agent

95 North Research Drive
Suite 100
Edwardsville, IL 62025

Office: 800-556-2663
618-692-9800
Fax: 618-692-9865

Email: venessa@assurancebrokers.com

schmooze

business after hours



Ashley Furniture, January 6



Ashley Furniture, January 6



Ashley Furniture, January 6



Ashley Furniture, January 6



Ashley Furniture, January 6



Ashley Furniture, January 6

networking@noon



ed-glen families, January 14



ed-glen families, January 14

ribbon cutting



Papa Murphy's Take 'N' Bake Pizza, January 27

5 Ways to See Your Business in *Common Ground*

- 1 Purchase Advertising
- 2 Write an "Ask the Expert" Column
- 3 Submit an Announcement
- 4 Win Our Business of the Month Award
- 5 Come to Chamber Events!

edoglen
Chamber of Commerce

1st annual membership meeting luncheon



L to R: Jay Blanquart, Dana Klassen, Dave Viox, Marc Voegele & 2010 Ambassador of the Year Rachel Case



2011 President Marc Voegele & 2010 President Jay Blanquart



L to R: 2010 Volunteer of the Year Kathy Goclan with Jay Blanquart

Not pictured is Katie Bennett, 2010 Young Professional of the Year.

your business

Tom Holloway of TheBANK of Edwardsville Appointed to Three Local Boards

TheBANK of Edwardsville recently announced that its president and CEO, Tom Holloway, has been appointed to serve on three local and state-wide Board of Director groups: Illinois Chamber of Commerce, St. Louis Regional Chamber & Growth Association and University Park SIUE.



The Illinois Chamber of Commerce is the state's oldest, largest broad-based business advocacy group that brings together members from every part of the state and every type of business or industry. Holloway joins other business leaders on the Board of Directors from areas throughout the State of Illinois.

The St. Louis Regional Chamber & Growth Association serves to connect business and civic communities in the 16-county St. Louis bi-state region. The organization works to support public policy and infrastructure initiatives and to provide capital and talent to improve the business climate and quality of life in the greater St. Louis area.

Holloway also accepted an appointment to the Board of Directors of University Park SIUE in Edwardsville. University Park SIUE is a 330-acre technology park on the campus of Southern Illinois University Edwardsville. The park provides

a unique opportunity for private sector emerging industries and businesses by enhancing their competitive positions through beneficial relationships with the University. As a member of the Board of Directors, Holloway will help guide the economic development efforts of University Park SIUE, enhancing the local economy and creating new jobs and opportunities.

In addition to these new appointments, Holloway also serves on the Board of Directors of EGHM School District #7 Foundation, Leadership Council of Southwestern Illinois, McKendree University, Memorial Group, Inc. (the parent company of Belleville Memorial Hospital), and SIUE Foundation.

Throughout its long year history, TheBANK of Edwardsville, with the help of its employees, has built a tradition of community service that includes everything from having floats in parades to sponsorships of fund-raisers benefiting non-profit organizations. TheBANK's Board of Directors as well as its more than 400 employees lend their time to a variety of civic organizations and clubs.

TheBANK of Edwardsville, with its 2010 theme: "Because We Care," has assets exceeding \$1.45 billion and a long tradition of providing personal service, offering innovative products and giving back to the communities in which it serves. For more information, please visit www.4thebank.com



Gateway Stresses Importance of Cervical Health

Approximately 11,000 American women will learn they have cervical cancer this year, and nearly 4,000 will die from an advanced form of the disease. This January, during Cervical Health Awareness Month, Gateway Regional Medical Center was focused on educating women about the importance of the Pap test as a screening tool for cervical cancer/HPV and about vaccines that can further reduce the burden of this devastating disease.

It's the start of a new year – a time many reflect on their health. To start the year right, Gateway encourages women to contact their health care provider to schedule a Pap test to check for cervical cancer. This screening is a crucial part of a woman's health care regimen, yet one that many overlook. "It's important to remember that cervical cancer is in most cases a preventable disease – as long as it's caught early," says Dennis Hurford, MD, an obstetrician/gynecologist at Gateway Regional. .

According to the American Cancer Society, Cervical cancer was once one of the most common causes of cancer death for American women. Then, between 1955 and 1992, the cervical cancer death rate declined by almost 70%. The main reason for this change was the increased use of the Pap test. This screening procedure can find changes in the cervix before cancer develops. It can also find cervical cancer early, in its most curable stage.

Gateway Regional encourages women to schedule a Pap test with their physician. If you, a family member or friend needs a physician, please call their Find-A-Physician line at 618.798.8888.

Sleep Disorders Center

at Northwest HealthCare



Getting a Good Night's Sleep?

Sleep is a vital part of life, essential for physical and mental restoration. Difficulties with sleep can negatively affect your health, quality of life and safety.

Millions of Americans of all ages have difficulty getting a good night's sleep on a regular basis. Sleep problems may indicate serious, underlying medical problems or reveal a need to change sleep habits, lifestyle or medications.

Having Trouble Getting a Good Night's Sleep?

The Sleep Disorder Center staff helps patients solve a range of sleep problems, including:

- Loud or excessive snoring
- Sleep Apnea (cessation of breathing during sleep)
- Restless Leg Syndrome
- Daytime sleepiness
- Restless sleep, frequent awakening
- Morning headaches
- Trouble awakening
- Early awakening
- Falling asleep at work or during other activities
- Insomnia, inability to quickly fall asleep or stay asleep
- Limb movements during sleep

Call 314-953-6774

**Northwest
HealthCare**

a part of Christian Hospital

BHC HealthCare

your business

GCS Board Election Held at Annual Meeting

GCS Federal Credit Union announces the positions of Directors and Credit Committee representatives named at the annual meeting held January 29.

Re-elected to serve two-year terms as Director were Bob Marcus, Cecil Williams, Robert Lyles, Harvey Scarsdale, Tom Grady, and Shirley Ochoa. Re-elected to serve a two-year term as representative of the Credit Committee was Nick Huniak. Continuing Officers for 2011 are Harvey Scarsdale, Chairman; Ron Jarrett, Vice-Chairman; Jim Devine, Treasurer; and George Mitchell, Secretary.

An estimated 150 members attended the meeting. Board members presented a 2010 financial review of GCS and were available to answer additional questions from members in attendance. Prize drawings were held and light refreshments and snacks were served.

Founded in 1941, GCS Federal Credit Union currently has assets of more than \$280 million. GCS serves more than 38,000 members throughout Madison and most of St. Clair Counties in Illinois.

Cold Stone Now Serving Rocky Mtn. Chocolate

Visit the co-branded Cold Stone Creamery/Rocky Mountain Chocolate Factory location in Edwardsville. They offer the most decadent candies, hand dipped chocolate covered strawberries and caramel apples. This is the perfect time of year to check out the extensive candy selection. They make caramel apples fresh in their store and can individually wrap them for any occasion! Their hand made chocolate and hand dipped chocolate covered strawberries can be packaged in gift boxes or customized in gift baskets.



Stop by the store or contact Karen personally at 618.567.6000 to learn more.

SOUTHERN ILLINOIS UNIVERSITY
EDWARDSVILLE

"I know my professors.
And they know me."

That's the power of



Class size is just one reason students choose Southern Illinois University Edwardsville. Here, you're not just another face in a lecture hall. The average undergraduate student-to-faculty ratio is 16-to-1. At SIUE, you'll get the degree you need for the career you want—with the personalized experience of a small, liberal arts college and the savings of a state university. It's just one more way the **e** equals excellence.

Learn more about the power of e. Call 800-447-SIUE or log on to siue.edu.

TECHNOLOGY SAMPLER

You asked. We listened.

In response to your suggestions, the Professional Education Committee has partnered with the Department of Corporate and Community Learning at Lewis and Clark Community College to bring you a series of four Technology Sampler courses. Each 2-hour course is available at just \$15 per person and includes lunch.

1 JAN 25 - QuickBooks: Making the Most of Your Business

Learn what QuickBooks can do for your business. Perfect for a manager/owner and accounts person to attend together to gather ideas and make decisions.

Taught by Susan Young.

2 FEB 22 - QuickBooks: Building Powerful Reports for Managing Your Business

Learn how to build powerful reports in QuickBooks. Perfect for a manager/owner and accounts person to attend together to better analyze the financial aspects of your business.

Taught by Susan Young.

3 MAR 29 - Writing Effective Emails

Tired of your emails being misunderstood? Frustrated by others failing to respond to or act on them? Come and learn the psychology to improved communications online.

Taught by Kathy Willis.

4 APR 26 - Excel Formulas & Functions

Let's trouble shoot together building formulas in Excel. Bring a challenge to the session to work on, and we will also show you some useful functions that may become your new favorites.

Taught by Dawn Zedolek.

Brought to you by:

National Bank

Shell Community
Federal Credit Union

TheBANK of Edwardsville

Edwardsville/Glen Carbon
Chamber of Commerce

11am-1pm at Lewis and Clark Community College's N.O. Nelson Campus, Room N4 110

TECHNOLOGY SAMPLER RESPONSE CARD

I will attend: ☐ Session 2 ☐ Session 3 ☐ Session 4 at \$15 (Chamber members) or \$20 (non-Chamber members) per session.

Business Name _____

Contact Person _____

Business Address _____

Business Phone _____

E-mail _____

I am enclosing a check for \$ _____

Please charge my (circle one) MasterCard / VISA

Credit Card # _____

Credit Card Expiration Date _____

Please return response card with payment to the Chamber office by Friday, February 18, 2011.

200 University Park Drive, Suite 260, Edwardsville, IL 62025
p: 618.656.7600 f: 618.656.7611

your business

Heyl Royster Welcomes Three Attorneys to Firm

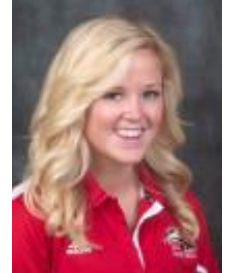
Three new associates have joined the law firm of Heyl, Royster, Voelker & Allen at its offices in Peoria and Edwardsville, Illinois. Joining the firm's Peoria office as an associate is Brad W. Keller. Originally from Quincy, Illinois, Keller received his undergraduate degree in Political Science from the University of Illinois in 2007 and graduated magna cum laude from the University of Illinois College of Law in 2010.

Joining the firm in its Edwardsville office are Gregory C. Flatt and Michael P. McGinley. Flatt, who is originally from the Quad Cities, received his undergraduate degree in English from the University of Iowa in 2002 and graduated from Washington University School of Law in 2010. McGinley, who is originally from Highland, received his undergraduate degree in English from Washington University in 1997 and graduated from Saint Louis University School of Law in 2010.

The law firm of Heyl, Royster, Voelker & Allen has more than 100 lawyers among its offices in Peoria, Springfield, Urbana, Rockford, Edwardsville, and Chicago, Illinois. To learn more, visit www.heyloyroyster.com.

Meade Joins Louer Facility Planning

Louer Facility Planning, Inc. is pleased to announce that Madison Meade has joined the company as an intern. Ms. Meade is a junior at Southern Illinois University Edwardsville, majoring in business administration with concentrations in marketing and management. She will graduate in May 2012.



Originally from Auburn, California, Ms. Meade located to the area after receiving a scholarship to play for the women's basketball team, the SIUE Cougars. In her position, she will assist with marketing, provide administrative support and gain exposure to the commercial furniture industry.



Celebrating 70 years of service with ...

70 Prizes in 70 Days!

Register to win a trip to Punta Cana, Dominican Republic! Here's how:

Go to www.k-hits.com/GCS and complete the online registration form JAN 10 - MAR 20. 1 random winner will be picked each day, for 70 days, and will receive a prize via mail. On MAR 21, 1 grand prize winner will be randomly drawn and will receive a 5-day/4-night trip to Barceló Punta Cana, in Punta Cana, Dominican Republic courtesy of Apple Vacations, America's favorite vacation company. It's that simple!

Register online to win at k-hits.com/GCS



Apple Vacations will schedule (1) four-night trip to Barceló Punta Cana, in Punta Cana, Dominican Republic for two adults departing from St. Louis, MO for the grand prize winner. Trip includes four-night accommodations, round-trip charter air, transfers to/from resort, non-motorized water sports, all food/drinks and the assistance of an in-resort Apple Representative. Trip is valued at \$2000 and travel must be completed by August 7, 2011. Taxes, insurance and additional expenses (such as optional excursions, spa treatments, phone calls, souvenirs) are the sole responsibility of the winner. Some restrictions apply. 1 entry per person accepted. Contest is open to anyone except employees of GCS and Emmis Radio. Prize cannot be exchanged for cash value.

myGCScu.com

PICKING FRIENDS IS EASY

Picking an insurance plan should be easy too

When there's so much out there, making the best choice can be frustrating. At Hortica, our insurance experts will guide you through the process of choosing the best insurance plan for your family or business that will meet your needs and keep you on budget. How **EASY** is that?

Home • Auto • Business • Life • Health
www.hortica-agency.com
#1 Horticultural Lane • Edwardsville, IL 62025
618.656.4088



WHO KNEW? 
INSURANCE & EMPLOYEE BENEFITS
More going on here than you think.

Professional assistance can save you time and money!



Linda Kuhlmann
Accountant/QuickBooks ProAdvisor
618.830-2272

www.kuhlmannservices.com

your business

MacXprts Extends Training Offerings

MacXprts-Illinois, the only Apple Specialist store in the Metro East, is pleased to announce expanded training offerings covering Macintosh computers, iPad, iPhone, and iPod Touch devices.

In addition to the now weekly small group classes on Tuesday and Thursday evenings, MacXprts now offers in-home training and one-on-one in-store trainings.

MacXprts is also happy to welcome Sarah Shipton on board as head trainer. Call MacXprts-Illinois, located in Edwardsville, at 618.655.0945 or visit www.macxprts.com/illinois for training availability and to schedule trainings.

Montessori Glen-Ed Announces Open House

Montessori Glen-Ed is having an open house February 17 from 6–7:30pm at 90 Kriege Farm Road (behind Wal-Mart). This is an opportunity to tour the school and to learn about the Montessori method of teaching. All are welcomed, and refreshments will be served.

If you have any questions or need any further information, please feel free to call Mary at 618.692.8249 or by e-mail monteglened@gmail.com



Sante Services

• Laser Hair Removal • Microdermabrasion • Signature Facials • Injectables • Weight Management

Sante Skin Care Products

• PCA Skin Chemical Peels • Latisse • Colorscience Pro Mineral Make up

2246 State Rt 157, Suite 175 (Meridian Centre One) Glen Carbon, IL

Dennis M. Hurford MD, Medical Director

618-288-4016

www.santeskinandbodyspa.com

"Where Science and Beauty Meet"



Gift Certificates Available

STL Fed Appoints Local Execs to New Community Depository Institutions Advisory Council

St. Louis Fed President James Bullard recently announced the appointment of 12 executives of smaller financial institutions to the Bank's new Community Depository Institutions Advisory Council (CDIAC). The council, drawn from communities across the Eighth District, will meet twice a year at the St. Louis Fed to advise Bullard on local credit, banking and economic conditions.



The Eighth District includes the state of Arkansas, and parts of Illinois, Indiana, Kentucky, Mississippi, Missouri and Tennessee.

Dennis M. Terry (pictured above), president and chief executive officer, First Clover Leaf Bank, Edwardsville, Ill., was named to a two-year term as the first chairman of the council. As part of his responsibilities, Terry will also report

twice yearly to the Federal Reserve Board of Governors in Washington, D.C.

Larry Ziglar, president of the First National Bank in Staunton, Staunton, Ill., will serve as a member for a two-year term.

"Community financial institutions are vital in creating and sustaining economic growth in our nation's communities," said Bullard. "As a key source of credit for small businesses, these institutions provide an important perspective on the relative health of the U.S. economy. The 12 appointees to our council are leaders in their communities and bring with them a diverse range of backgrounds and experiences that will help us paint a more complete economic picture of our region. I greatly appreciate their willingness to serve in this key role for the St. Louis Fed and for the Federal Reserve System."

The St. Louis Fed CDIAC council will hold its inaugural meeting March 1-2, 2011. For more information, see the St. Louis Fed's CDIAC site, or for more information about all of the Federal Reserve System CDIAC councils, see the Federal Reserve Board of Governors' web site.

2011 St. Louis Fed Community Depository Institutions Advisory Council:
Dennis M. Terry, First Clover Leaf Bank; Edwardsville, IL

Kirk P. Bailey, Magna Bank; Memphis, TN

Glenn Barks, First Community Credit Union; Chesterfield, MO

H. David Hale, President & CEO, First Capital Bank of Kentucky

D. Keith Hefner, Citizens Bank & Trust Company; Van Buren, AR

Gary E. Metzger, Liberty Bank; Springfield, MO

William J. Rissel, Fort Knox Federal Credit Union; Radcliff, KY

Mark A. Schroeder, German American Bancorp; Jasper, IN

Gordon Waller, First State Bank & Trust; Caruthersville, MO

Larry T. Wilson, First Arkansas Bank & Trust; Jacksonville, AR

Vance Witt, BNA Bank; New Albany, MS

Larry Ziglar, First National Bank Staunton; Staunton, IL



Financial Fitness for Women



Start your new year off right with this one-night workshop designed to help you tackle the most common financial challenges facing women today. You'll learn strategies for effective money management including budgeting, saving and reducing debt.

Thursday, February 24, Godfrey

Class size limited. Call today to enroll! 618.468.5750

It's what you know.

your business

The Goddard School Announces \$10K Scholarship Opportunity

Edwardsville's Goddard School is calling out to all alumni. The organization has just announced that it is accepting applications for its annual \$10,000 Anthony A. Martino Memorial Scholarship. The scholarship is given to one Goddard School alumnus each year and helps to finance the tuition of the college or university of the student's choice.

"The Anthony A. Martino Memorial Scholarship provides financial support to a graduate from The Goddard School who currently demonstrates excellent work ethic and perseverance at their high school," says Joe Schumacher, chief executive officer for Goddard Systems, Inc. "We know we have many alumni who meet the criteria and we are excited to recognize the recipient of this prestigious award."

The Anthony A. Martino Memorial Scholarship is named in memory of the founder of The Goddard School, an entrepreneur who started several other well-known franchise companies including Aamco Transmissions, Inc. and Maaco Auto Painting and Bodyworks, Inc.

The application deadline for the Anthony A. Memorial Scholarship is February 11, 2011. Eligible applicants can access the scholarship application on Goddard's Web site at www.goddardschool.com under the Communication tab.

At The Goddard School, children are encouraged to develop at their own pace in a warm environment supported by a team of dedicated teachers. Children are also provided with carefully planned educational programs that meet the social, emotional, cognitive and physical needs of each child.

To learn more about The Goddard School, or about the Anthony A. Martino Memorial Scholarship, families are encouraged to visit www.goddardschool.com.



Caring compassionately for
aging and disabled people since 1985

Free to Businesses and Organizations Conversations on Caregiving for Family Caregivers

Employers and leaders know the toll caregiving can take on an employee or member. Thanks to a grant, our experts can share strategies and resources with those charged with caring for aging or disabled loved ones.

The seminar includes:

- Dealing with the emotions and family relationships
- Resources to make the caregiving journey easier
- An opportunity to share frustrations and challenges
- A certificate for an individual, one-hour complimentary care planning session

Morning, lunch or evening workshops available.
Call to schedule your session.

Attention: Businesses and Organizations Free Meeting Space!

Centrally located, convenient to major highways.
Wifi and projection equipment included.
Better yet, we'll even feed you!

St. John's Community Care invites you to use our conference room for daytime meetings.
We can accommodate up to 15 people.

All we ask is that you allow us 15 minutes for a tour and a brief overview of our organization.

Call to schedule your next meeting.

Proud member of



222 Goethe Ave. • Collinsville, IL 62234 • 618-344-5008 • www.stjohnscc.org



Anderson Hospital Foundation Established through Gift from the Late Hermilda Listeman

Anderson Hospital has been making a difference in the healthcare of Madison County residents since 1977. Anderson is an independent, not-for-profit hospital dedicated to creating a health care setting in which quality of life and service excellence are experienced by its patients, their families, its staff and the community. In an effort to recognize Anderson Hospital as a charitable organization within our community, we have recently established the Anderson Hospital Foundation with a gift from the late Hermilda Listeman, a Collinsville resident.

Anderson Hospital celebrated this gift with the unveiling of the newly named, Hermilda Listeman Family Area. Located on 2nd floor of the hospital, this area offers a comfortable environment for family and friends of our patients to gather.

Attending the January 25th unveiling were friend of Listeman, Rich Wallace of Collinsville; Anderson Auxiliary Officers; Anderson Hospital Board of Trustees; Members of the Capital Campaign Board and others. Those close to Listeman shared that she enjoyed cooking from a young age and had

an extensive collection of recipes and cookbooks dating back to the 1800s which are now at the University of Illinois Library. Listeman was active in the community through the Anderson Auxiliary, her church, and other organizations. She continues her support of the community through her generous contribution to Anderson Hospital and we are proud to recognize her with the Hermilda Listeman Family Area and the establishment of the Anderson Hospital Foundation.

The Anderson Hospital Foundation will establish longevity of a donor gift and offer such donor opportunities as endowments, planned giving, charitable gift annuities, grants, memorials, bequests, naming rights, annual campaigns, and future capital campaigns. A governing Board of Directors will focus solely on contributions, prospecting and obtaining new donors, while making certain sound planning investments are made for the foundation, all creating an increase of income revenue for the hospital. Anderson Hospital Board of Trustees Member, Lendell Phelps, has been appointed Chairman of the Anderson Hospital Foundation Board.

For more information how you can be involved, please contact Alice Drobisch, Chief Development Officer, at 618.391.6427 or email drobisch@andersonhospital.org.

AN ADDED MEMBER BENEFIT

As a member of

**EDWARDSVILLE/
GLEN CARBON
CHAMBER OF
COMMERCE**

YOU'LL SAVE BIG!

We are pleased to offer special discount rates from Auto-Owners Insurance Company on business insurance —to members of company approved organizations like yours!

Fast, fair and efficient service — from The "No Problem" People®

**CALL TODAY AND SEE
HOW YOU'LL SAVE!**

**Southern Illinois
Underwriters Agency, Inc.**
P.O. Box 463
105 Plaza Court
Edwardsville, Illinois 62025
618-656-0120
C. William Schmidt • Matt Rogier

Auto-Owners Insurance
Life Home Car Business
The "No Problem" People®



ABOVE, L to R: Keith Page, Anderson Hospital President; Alice Drobisch, Anderson Hospital Chief Development Officer; Mark Shashek, Anderson Hospital Board of Trustees Chairman; Lendell Phelps, Anderson Hospital Foundation Board Chairman; Rich Wallace, Collinsville.



EDWARDSVILLE AREA ELECTRONICS & APPLIANCE RECYCLING PERMANENT DROP-OFF LOCATION

**The 4th Friday of Each Month (February through November) from
12 pm – 6 pm**

**Bank of Edwardsville
2142 S State Route 157
Glen Carbon, IL 62034**

Suggested items for recycling include computers, monitors, other computer hardware including cables, office/business equipment and machinery, telecommunications equipment including phones and clocks, televisions, VCR's, stereos, cameras, other audio/video equipment, data storage devices including CD's, VHS tapes and computer software, home electronics, blenders, toasters, irons, washing machines and dryers, dishwashers, furnaces, hot water heaters, home medical equipment, industrial machinery, lawn mowers, tillers, tools, air conditioners, refrigerators, humidifiers, old motors, transformers, electrical equipment, power supplies, and car batteries.

Unacceptable items for recycling include tires, wood furniture, other wood products, paint and paint cans, and household and industrial chemicals

There are suggested drop-off donations (\$5 each) for computer monitors and laptops and televisions. Large appliances and all freon-containing devices there is a \$5 required fee. **Everything else may be dropped-off free of charge.** As WITS is a not-for-profit, community agency in the greater St. Louis region, all donations of reusable items are tax-deductible and will be refurbished when possible and given to one of our programs such as Kids for Kancer, Free Computer Program or Veteran Technology.

For more information,
WITS website (<http://www.witsinc.org/>)
or call WITS at 314-382-1650

your business

Grizzlies Unveil February Suite Promotion

With the cold in the air, the Gateway Grizzlies have unveiled a promotion to get fans thinking of warm sunny baseball! Starting Tuesday, February 1st, the Grizzlies are running their 28 Prizes Promotion for the month of February. When a fan books a party suite in the month of February, they are automatically placed into a drawing to win a prize. If they book on the 1st of February, they are entered to win all 28 prizes.

Prizes include, but are not limited to: win 2-Half Season Tickets and a parking space at GCS Ballpark; win a personalized Grizzlies jersey and team fitted hat; opportunity for you and three friends to watch batting practice on the field; win a chance for you and ten friends to play the Grizzlies front office staff in a softball game at GCS Ballpark.

For a full list of the prizes offered, visit gatewaygrizzlies.com and click on the 28 Prizes story. The party suite must be paid in full at the time of the booking and the deposit is non-refundable. To book a party suite if inquire about season tickets, contact the Grizzlies office at 618.337.3000.

Regions Names Lammers Relationship Manager

Community President Keith Cook is proud to announce that Terry Lammers has joined Regions Financial Corp. as a Vice President specializing in Agricultural and Commercial Banking. Mr. Lammers will serve the metro east agricultural initiative.



Terry is an established business owner, so he brings a unique talent set to Regions. He recently sold his 21-year-old wholesale fuel, oil and grease distribution company. Terry is a graduate of Webster University with a bachelor's degree in business administration. He is president of the Highland-Pierron Fire District, president of the Highland Rotary Club, and a member of the St. Joseph's Hospital Friends Board. He lives in Highland with his wife, Julie, and their 3 children. His office will be located at 12515 State Route 143 in Highland.



WAOX

105.3

Talley Stations

WSMI

FM 106.1 AM 1540

800-369-9764

www.wsmiradio.com

www.waox.com

The best time to find a primary care doctor? Before you need one.

One of the most important things you can do for your health is to have a primary care physician. So it's good to know that Drs. Sam and Nan Suthan, board-certified internal medicine physicians who focus on primary care, have come to our community. They have a brand-new office and look forward to serving their neighbors — from teenagers to senior adults. They'll bring your family the same compassion and skill they'd extend to their own. For your appointment, call 618-258-7343.



*Sam Suthan, M.D., Nan Suthan, M.D.
Board Certified in Internal Medicine*

Heartland Healthcare of Wood River
8 a.m.–5 p.m. Monday–Friday
618-258-7343
300 Lakin Blvd. | Wood River, IL



Members of the Medical Staff at
**GATEWAY REGIONAL
MEDICAL CENTER**
Find-A-Physician 798-8888

