

August 2010



Edwardsville | Glen Carbon Chamber of Commerce

**It's everyone's business.**

# Common Ground



PRST STD  
U.S. POSTAGE  
**PAID**  
EDWARDSVILLE, IL  
PERMIT # 29

# connect

## 2010 Executive Directors

**Jay Blanquart**, President  
Blanquart Jewelers & Corp. Gifts

**Marc Voegelé**, First Vice President  
Express Employment Professionals

**Skip Sponeiman**, Second Vice President  
Wal-Mart

**Paul Millard**, Third Vice President  
TheBANK of Edwardsville

**Kelly Wagner**, Past President  
First Clover Leaf Bank

**Mike Marshall**, Treasurer  
Anderson Hospital

## 2010 Directors

**Bruce Coury**  
Individual Member

**Jim Carroll**  
Hortica Insurance & Employee Benefits

**Michael Lengacher**  
The Scheffel Companies

**Lelan Olsen**  
Olsen Veterinary Clinic

**Pat Slaughter**  
Fitness 4 Life PT

**Len Scaturro**  
Crushed Grapes, Ltd.

**Kelly Cobb**  
Culver's of Edwardsville

**Emily Gates**  
Children's Home + Aid

**Todd Sivia**  
Sivia Business & Legal Services, PC

**Mark Richardson**  
MML Investors

**Joan Frey**  
Miss Bailey's Poppy Patch

**David Toby**  
FCB Edwardsville Bank

**Gary Hoggatt, Jr.**  
National Bank

**Danelle Brown**  
Marcel Brown Technology Services

## Ex-Officio

**Robert Jackstadt**, Mayor  
Village of Glen Carbon

**Gary Niebur**, Mayor  
City of Edwardsville

**Ed Hightower**, Superintendent  
Edwardsville School District #7

**Erika Kennett**, Director  
The Alliance

## 2010 Advertising Rates:

	Monthly Rate	Color Charge
1/8 Page	\$32	\$7
1/4 Page	\$65	\$10
1/2 Page	\$110	\$15
Full Page	\$210	\$20
Back Page	\$310	Included

Book One Year of Advertising in Common Ground and Receive a 15% Discount.

Call 618.656.7600 for details.

## Chamber Staff

**Carol Foreman**  
Executive Director  
cforeman@edglenchamber.com

**Desirée Bennyhoff**  
Communications Director  
dbennyhoff@edglenchamber.com

**Linda Daniels**  
Membership/Board Relations  
ldaniels@edglenchamber.com

**Bonnie Kotsybar**  
Greeter Service & Events Coordinator  
bkotsybar@edglenchamber.com

**Gloria Pugh**  
Accounts Payable & Receivable  
gpugh@edglenchamber.com

## Contributors

**Desirée Bennyhoff**  
Editor, Layout & Design, Contributing Writer

**Marci Winters-McLaughlin  
& Rachael Wilbur**  
The Edwardsville Intelligencer  
Photo Contributors

## Mission Statement

Through commitment and involvement of its members, the Edwardsville/Glen Carbon Chamber of Commerce provides leadership for the benefit of the business community by promoting economic opportunities, advocating in the interests of business, providing members with education and resources, and encouraging mutual support.

# Common Ground

200 University Park Drive, Suite 260  
Edwardsville, Illinois 62025  
Phone: (618) 656-7600  
Fax: (618) 656-7611  
www.edglenchamber.com

## on the cover

### Anderson Hospital

With over 90,000 patients annually relying on Anderson Hospital for their health care, it is hard to imagine our community being without an area hospital. Anderson Hospital is making a difference today, thanks to the work of many dedicated people across many decades.

The need for an area hospital was first voiced in 1920 when Anna Forberg Cook offered to give Collinsville a site on St. Clair Avenue on which to build a hospital. But with the city unable to finance the project, the idea was withdrawn. At almost the same time, the neighboring city of Edwardsville was also trying for a hospital only to find no available financial support.

The idea was revived in the 1940s in both towns again. In Collinsville, a proposal for a township hospital, requiring taxes to build and support the facility, lost 7 to 1. In Edwardsville, a non-profit corporation was formed and a 10-acre site donated. A \$300,000 fund drive was launched in 1945, but by 1948 only a quarter of the goal had been collected, so the idea was abandoned.

Edwardsville leaders resurrected the idea once more in the early 1960s with a referendum for a tax-supported hospital, but the idea never passed. At the same time leaders in Collinsville were talking about the possibility of building JFK Hospital, a satellite hospital of St. Mary's in East St. Louis. Funds were raised, and a site was purchased, only to have the idea once again fold due to the lack of support. The idea was dropped in 1967, with the land eventually becoming the site of the Unit 10's Greenwood Collinsville High School campus. Most money was received back by donors, while others "let it ride" for a new effort.

Those donors would finally support a successful campaign in 1968 when Collinsville and Edwardsville joined forces by incorporating a steering committee, the Central Madison County Hospital Association (CMCHA). A major fundraising campaign was then conducted by Haney Associates, Inc. in 1971. Paid professionals and hundreds of volunteers spent thousands of hours raising funds to meet their goal of \$1 million. The work of these and hundreds of other dedicated volunteers paid off in March of 1972 when a total of \$1,774,436.15 had been raised, surpassing the goal by almost three-quarters of a million dollars.

On April 21, 1974, the work of many years came one step closer to reality as ground was broken for the construction of the hospital. And almost two and a half years later, the hospital opened its doors to patients on January 5, 1977. "The hospital has become a reality," said William Jokerst back in 1976, "because of the efforts of so many people who have worked together for a common goal." Jokerst went on to say, "Selling the idea of a hospital was never difficult because the people knew the need existed. And the men, women, and organizations who made pledges have kept their word in fulfilling a moral obligation."



# special investors

## Gold Level

Anderson Hospital  
Wal-Mart

## Silver Level

AmerenIP  
AT&T  
Gateway Regional Medical Center  
Hortica  
Meridian Village  
TheBANK of Edwardsville

## Bronze Level

Associated Bank  
Best Buy  
Cassens & Sons  
Cassens Transport  
Charter Business  
City of Edwardsville  
Commerce Bank  
Country Club Lawn & Tree  
Doubletree Hotel Collinsville  
Eden Village Retirement Community  
Edwardsville School District #7  
Edwardsville Publishing Company  
First Clover Leaf Bank  
Hurford Architects, Inc.  
Juneau Associates, Inc., PC.  
Madison Mutual Insurance Co.  
MetLife  
Prestige Management Services, LLC  
Red Robin Gourmet Burgers  
Richards Brick Company  
Royal Office Products, Inc.  
Royal Solutions, LLC  
R.P. Lumber  
Shop 'N' Save  
Southern Illinois University Edwardsville  
Village of Glen Carbon  
West & Company, L.L.C.

## Premier Level

'62 Sports Group  
Able Sign Company  
Abstracts & Titles Inc.  
American Family Insurance  
Annie's Frozen Custard  
Associated Physicians Group  
Assurance Brokers  
B & R Cleaning  
Bard & Didriksen Pediatrics  
Bauer-Hite Orthodontic  
Baugher Financial & Assoc. Inc.  
Bella Milano Restaurant  
Big Daddy's Edwardsville  
Brickman Orthodontics  
Byron Gerber Petri & Kalb, LLC  
Bull and Bear Grill & Bar  
Bully's Smokehouse  
Caulk's Collision  
Chicago Title Insurance  
Coffey & McCracken Law Firm P.C.  
Coldwell Banker Brown Realtors  
Collision Plus Auto Body  
Comfort Inn  
Country Club Lawn & Tree  
Country Hearth Inn & Suites  
Crawford, Murphy, & Tilly, Inc.  
Culver's of Edwardsville  
Days Inn  
Denny's  
Dr. Hal R. Patton, D.D.S.  
DRDA Electric Company  
Eagle Publications, Inc.  
Eberhart Sign & Lighting Co.  
Edwardsville Nursing & Rehabilitation  
Edwardsville Pet Hospital  
El Maguay  
Elmwood Nursing and Rehab  
Excelegy Consulting Group  
Extra Help, Inc.

Fazoli's  
FCB Edwardsville Bank  
Fitness Designs  
First Bank  
First Mid-Illinois Bank & Trust  
First National Bank - Maryville  
Fitness 4 Life Physical Therapy  
Fountain View Manor  
Gateway Center  
Gateway Grizzlies  
Gerold Moving  
Glik's Department Store  
Grace Manor  
Hampton Inn & Suites  
Hawkins Law Office  
Hawthorne Animal Hospital  
Holiday Inn Express  
Illinois Dept. of Employment Security  
Imaging Center of Southern Illinois  
IMO'S Pizza  
Jan's Hallmark Shop  
J.F. Electric Inc.  
Joe's Pizza & Pasta  
Kentucky Fried Chicken  
Kitchenland  
Kurt's Carstar Collision Center  
Littler Mendelson, PC  
Louer Facility Planning  
Magnuson Camelot Hotel  
Market Basket  
Maryville Women's Center & Med Spa  
Massage Envy  
Masterpiece Smiles - Dr. Noll  
Mastroianni Orthodontics  
Maurices  
Meridian View Family Dental  
Midwest Occupational Medicine  
Minuteman Press  
Mt. Everest Air  
Neruda  
OCE Imagistics  
Office Depot  
One America Securities  
Open MRI of Southern IL, LLC  
Phillips Furniture  
Piedmont Development Corp.  
ProSource Wholesale Floorcoverings  
Prudential One Realty Centre  
Red Robin  
RED'z Rib Shack  
Reed, Armstrong, Gorman, Mudge & Morrissey  
RE/MAX Integrity Realty Centre  
Regions Bank  
Sandberg, Phoenix & von Gontard  
Schnucks  
Scott Credit Union  
Shell Community Federal Credit Union  
Shoe Carnival  
Sivia Business & Legal Services  
Southern Illinois Underwriters  
Specialty Printing  
Stonebridge Development  
Stahly Cartage Co.  
Sunset Hills Country Club  
Sunset Hills Family Dental  
Super 8 Pontoon Beach  
TheEDGEBANK  
The Gilliland Financial Group  
The Scheffel Companies  
The Telegraph  
Thouvenot, Wade & Moerchen Inc.  
University Nursing & Rehabilitation  
USO of Missouri  
US Bank  
Valley View Cemetery, Mausoleum &  
Funeral Home  
WBGZ Radio  
Wenzel & Associates

# events

## 8/12 Thursday 4pm

Ribbon Cutting  
World Finance Corp.  
2715 North Center Street  
Maryville, IL 62062

## 8/13 Friday 12-1pm

networking@noon  
hosted by Chamber Internet  
Services at Bella Milano  
1063 South IL Route 157  
Edwardsville, IL 62025

## 8/19 Thursday 4:30pm

Ribbon Cutting  
Regions Bank  
2120 South IL Route 157  
Glen Carbon, IL 62034

## 8/19 Thursday 5-7pm

Business After Hours  
Regions Bank  
2120 South IL Route 157  
Glen Carbon, IL 62034

## 8/23 Monday 4:30-6:30pm

Meet & Greet Your Elected  
Officials at Glen Carbon  
Centennial Library  
198 South Main Street  
Glen Carbon, IL 62034

## 8/24 Tuesday 7:30-9:30am

Building Blocks for Business  
Recovery: Energy Efficiencies  
& Cost Savings  
Double Tree Hotel &  
Conference Center  
Collinsville, IL 62234

## 8/25 Wednesday 4:30pm

Ribbon Cutting  
Grace Manor  
1801 North Main Street  
Edwardsville, IL 62025

## 8/27 Friday 6pm

SIUE Block Party  
Downtown Edwardsville  
Edwardsville, IL 62025

## 8/31 Tuesday 4pm

Ribbon Cutting  
The Cup  
1057 Century Drive  
Edwardsville, IL 62025

# save the date

## 9/2 Thursday 5-7pm

Business After Hours  
Neruda & BPW  
4 Club Centre Court  
Edwardsville, IL 62025

## 9/10 Friday

YPG Golf Lessons w/ Mike Suhre  
Oak Brook Golf Club  
9157 Fruit Road  
Edwardsville, IL 62025

## 9/15 Wednesday 4:30pm

Ribbon Cutting  
L & N International Market  
1719C Troy Road  
Edwardsville, IL 62025

## 9/16 Thursday 5-7pm

Business After Hours  
Wang Gang  
4 Club Centre Court  
Edwardsville, IL 62025

## 9/24 Friday 5:30pm

YPG Meet & Greet Cookout  
Edwardsville Township Park

## 9/29 Wednesday

Ribbon Cutting & Open House  
Imaging Center  
2016 Vadalabene  
Maryville, IL 62062

## 9/30 Thursday 5-7pm

Business After Hours  
Royal Solutions  
200 University Park Drive Ste 260  
Edwardsville, IL 62025

## 10/1-3 Fri/Sat/Sun

Fallfest

## 10/4 Monday

Annual Golf Challenge  
Sunset Hills Country Club  
2525 Highway 157 South  
Edwardsville, IL 62025

## 10/8-10 Fri/Sat/Sun

SIUE Homecoming



# connect

## business after hours schedule

The purpose of a networking mixer is to meet new people, make new contacts, promote your business, and talk with other business people facing the same challenges as you. All are welcomed and invited to attend. Hors d'oeuvres and beverages are provided. A business card raffle and 50/50 drawing will occur at approximately 6pm. Entry fee is \$5 for Chamber members and \$15 for non-members. This is an excellent networking opportunity!

**8/19 Thursday 5-7pm**

Regions Bank BAH & Grand Opening  
2120 South IL Route 157 in Glen Carbon

**9/2 Thursday 5-7pm**

Neruda and Business & Professional Women  
4 Club Centre Court in Edwardsville

## networking@noon schedule

Can't make a Business After Hours? networking@noon is a great way to meet other business people in a smaller group setting without taking time away from your busy day. This fun, fast-paced, members-only "speed networking" event is designed to get you in, fed, connected, and on your way in 60 minutes or less.

**8/13 Friday 12-1pm**

hosted by Chamber Internet Services  
at Bella Milano  
1063 South IL Route 157 in Edwardsville

Would you like to schedule a networking@noon event in 2010? Contact Linda Daniels at [ldaniels@edglenchamber.com](mailto:ldaniels@edglenchamber.com) or 618.656.7600 for details.



### *Sante Services*

• Laser Hair Removal • Microdermabrasion • Signature Facials • Injectables • Weight Management

### *Sante Skin Care Products*

• PCA Skin Chemical Peels • Latisse • Colorscience Pro Mineral Make up

**2246 State Rt 157, Suite 175 (Meridian Centre One) Glen Carbon, IL**

*Dennis M. Hurford MD, Medical Director*

**618-288-4016**

**[www.santeskinandbodyspa.com](http://www.santeskinandbodyspa.com)**

*"Where Science and Beauty Meet"*



*Gift Certificates Available*

# the newly connected

**Bill Bright**

*Individual Member*  
20 Camelot Drive  
Edwardsville, IL 62025  
618.447.7653

**Chamber Internet Services**

*Managed SEM Campaigns*  
3220 Hunters Way  
Belleville, IL 62221  
618.558.9450  
[www.chamberinternet.com](http://www.chamberinternet.com)

**Doubletree Hotel  
Collinsville/St. Louis**

*Hotel, Conference Facility  
& Porter's Steakhouse*  
1000 Eastport Plaza Drive  
Collinsville, IL 62234  
618.345.2800  
[www.doubletreecollinsville.com](http://www.doubletreecollinsville.com)

**Edwardsville  
Wrestling Club**

*Non-Profit Wrestling Club*  
6168 Center Grove Road  
Edwardsville, IL 62025  
618.204.2415  
[www.edwardsvillewrestling.com](http://www.edwardsvillewrestling.com)

**GlenEd Sliders  
Fastpitch Club**

*Developing Softball Fundamentals*  
1310 Caribbean Drive  
Edwardsville, IL 62025  
618.920.1583

**LaBest Inc.**

*Pet Boarding, Training & Grooming*  
4933 Indian Hills Drive  
Edwardsville, IL 62025  
618.692.6399  
[www.labestinc.net](http://www.labestinc.net)

**Liberty Tax Service**

*Tax Services*  
1097 Beltline Road  
Collinsville, IL 62234  
618.346.0415  
[www.libertytax.com](http://www.libertytax.com)

**Meridian View  
Family Dental**

*General Dentistry*  
2133 South IL Route 157  
Edwardsville, IL 62025  
618.656.2006  
[www.meridianviewdental.com](http://www.meridianviewdental.com)

**RUSH**

*Dance Studio*  
322 North 43rd Street  
Belleville, IL 62226  
618.698.6924

**Shrader & Associates, LLP**

*National Law Firm*  
22A Ginger Creek Parkway  
Glen Carbon, IL 62034  
618.659.0001  
[www.shraderlaw.com](http://www.shraderlaw.com)

**SSM Physical Therapy**

*Physical, Occupational  
& Vestibular Therapy*  
15 Junction Drive  
Glen Carbon, IL 62034  
618.659.9666  
[www.ssmphysicaltherapy.com](http://www.ssmphysicaltherapy.com)

**T-Mobile Wireless Vision**

*Telecommunications*  
2324 Troy Road  
Edwardsville, IL 62025  
618.692.6166  
[www.t-mobile.com](http://www.t-mobile.com)

**Twist Fro Yo Café**

*Premium Frozen Yogurt*  
1063 South IL Route 157  
Edwardsville, IL 62025  
[www.twistfroyocafe.com](http://www.twistfroyocafe.com)

**World Finance Corp.**

*Loans & Tax Preparation*  
2715 North Center Street  
Maryville, IL 62062  
618.288.4382

# From The Desk of Carol Foreman

A recent Edwardsville Rotary program, presented by Rotary District Governor David Parsons, really got my attention. Mr. Parsons spoke about the need for clubs to adapt to change and to think bigger, better and bolder, pointing out that organizations become less relevant when they fail to keep current. Specifically, he stressed the importance of involving new generations to keep in tune with the times.

The Chamber's previous three-year strategic plan included plans to integrate new generations into our organization, and that goal was accomplished through the establishment of our Young Professionals Group (YPG). We know that we need to engage new professionals in order to remain pertinent and vibrant. Through an active leadership team and strong committee chairs, YPG has hosted excellent social events, undertaken philanthropic endeavors, and provided valuable ways to interact with community leaders through the Learn from a Leader Breakfast series.

E-mail me at [cforeman@edglenchamber.com](mailto:cforeman@edglenchamber.com) if you have any new ideas or suggestions about how we might continue to attract and serve this new generation of leaders – your thoughts are always welcomed.

Finally, I take this opportunity to thank two local businesses for their recent support of the Chamber – U.S. Bank for sponsoring our Building Blocks for Business Recovery Series, and the attorneys at Sandberg Phoenix & von Gontard PC for sponsoring our upcoming Meet & Greet Your Elected Officials event. Their generosity has allowed us to keep costs down and provide greater value to our membership.

Sincerely,

Carol Foreman, Executive Director



# Edwardsville/Glen Carbon Chamber of Commerce

## 2011 Board of Directors Application

For consideration by the nominating committee for a Board of Directors position or to nominate someone else, please fill out the following application form and return to the Chamber office. The nominating committee will consider recommendations for open board positions through **September 3**.

Name \_\_\_\_\_

Company \_\_\_\_\_

Address \_\_\_\_\_

\_\_\_\_\_

Phone \_\_\_\_\_ Email \_\_\_\_\_

What qualities do you feel you would bring to the Board?

\_\_\_\_\_

\_\_\_\_\_

\_\_\_\_\_

\_\_\_\_\_

Why do you want to be on the Board?

\_\_\_\_\_

\_\_\_\_\_

\_\_\_\_\_

\_\_\_\_\_

Signature \_\_\_\_\_

Please sign and forward to:

Edwardsville/Glen Carbon Chamber of Commerce  
200 University Park Drive, Suite 260  
Edwardsville, IL 62025

Or Fax to 618.656.7611

# connect

## Save the Date for Block Party

WHAT: 11th Annual Edwardsville Block Party

WHEN: Friday, August 27, 2010 from 6PM–12AM

WHERE: Downtown Edwardsville

Join the City of Edwardsville, SIUE, and the Edwardsville and Glen Carbon Chamber of Commerce for an evening of fun for the entire family. Enjoy live music by Johnny Rock-itt, free inflatables, and free carnival games. Local restaurants will be on hand to sell food. You can also learn more about area businesses at their information booths!

Visit the Chamber's beer tent – all proceeds support our scholarship fund!

## Edwardsville Named Top Town for Families by Family Circle Magazine

The Edwardsville/Glen Carbon Chamber of Commerce would like to congratulate the City of Edwardsville for ranking third on *Family Circle* magazine's list of America's best communities across the country.

In July, *Family Circle* announced the results of its exclusive survey to identify the best towns and cities for families. The communities featured in the magazine's annual roundup of perfect places to call home combine affordable housing, good neighbors, green spaces, strong public school systems and giving spirits. The results of the comprehensive survey appear in *Family Circle*'s August 2010 issue.

The article can be found at [www.familycircle.com](http://www.familycircle.com)

### 2010 SIUEeDAY

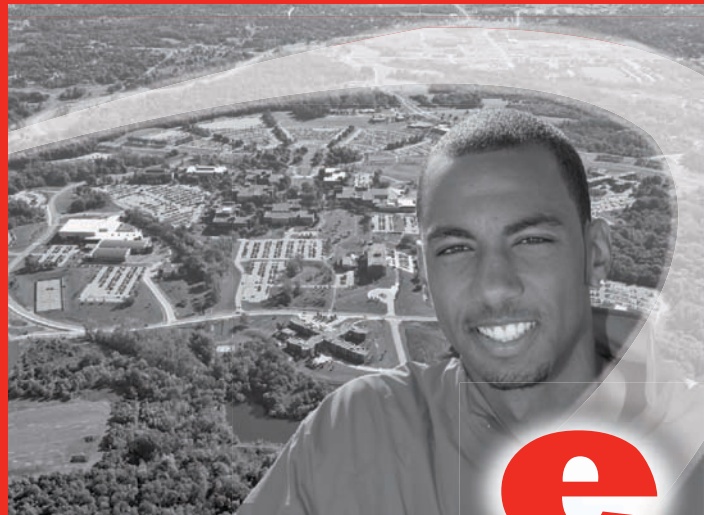
Partner with us today!

[siue.edu/siuedaypartners](http://siue.edu/siuedaypartners)

- SIUE has produced more than 85,000 graduates
  - More than 43,000 of those graduates live within 50 miles of the University
  - More than 19,000 of those alumni live in Madison County, Illinois
  - Nearly 11,000 SIUE graduates call St. Clair County, Illinois home
- The SIUE Alumni Association is in partnership with more than 40 local and regional businesses who offer discounts to Alumni Association members.
- During the 2009-10 academic year, 552 students participated in a co-op or internship through the Career Development Center.
  - 92 percent of employers rated participating co-op/internship students as either Outstanding or Very Good

Strengthening the Community

## SIUEeDAY 2010



*That's the power of*

Friday, October 15, 2010  
8 a.m. – 10:30 a.m.  
Southern Illinois University Edwardsville  
Morris University Center

# learn



## Building Blocks for Business Recovery

sponsored by U.S. Bank

**SESSION 3: Tuesday, August 24**  
*Energy Efficiencies & Savings*

**Ameren Act On Energy**  
Energy Saving Resources

**U.S. Green Building Council St. Louis Chapter**  
Green Building Practices & Principles  
in the St. Louis Region

**Day & Night Solar**  
Solar System Incentive Programs



**7:30-9:30am at the Double Tree Inn & Conference Center in Collinsville, IL • Full Breakfast Included**

### \$18 Per Person

Business Name \_\_\_\_\_

Business Address \_\_\_\_\_

Names of Attendees \_\_\_\_\_

I am enclosing a check for \$ \_\_\_\_\_

Please charge my (circle one) MasterCard / VISA

Credit Card \_\_\_\_\_ Expiration Date \_\_\_\_\_

Signature \_\_\_\_\_

***Fax: 618.656.7611***



# connect

## Ed/Glen Halloween Parade October 31

The Annual Edwardsville/Glen Carbon Halloween Parade is scheduled for the evening of Sunday, October 31 in downtown Edwardsville. This year's theme is Harvest Homefest.

Applications will soon be available at [www.edglenhalloween.com](http://www.edglenhalloween.com). The deadline to register an entry in the parade is Monday, October 11.



## Community Wide Fallfest Set for October 1, 2 & 3

The second annual Fallfest, to be held Friday–Sunday, October 1–3, is a Chamber sponsored event planned to spotlight special events going on in Edwardsville, Glen Carbon, and on SIUE's campus.

Some events already on our schedule include the mourning exhibit at the 1820 Colonel Benjamin Stephenson House, Bobby Norfolk at Glen Carbon Centennial Library, Tin Show at Edwardsville Arts Center, and the 3rd Annual Twilight Torch Ride for Special Olympics.

Call Carol at 618.656.7600 to find out how you can get involved by hosting an event, such as a customer appreciation day, or partnering with one of the many great non-profit organizations in our community.

The Chamber is committed to helping promote your events!



**Anderson is proud to introduce this remarkable option to our patients!**

The newest technology for **minimally invasive surgeries**, **da Vinci® Si™** is being used for urological, gynecological and general surgical procedures offering patients:

- Less invasive surgery, lowered risk of infection
- Precision, with dime-sized incisions
- Faster recovery, quicker return to normal activities

**Talk to your doctor** about **da Vinci® Si™** if you are planning for surgery or log onto **[www.andersonhospital.org](http://www.andersonhospital.org)**



*The future of surgery is here.*

And in Southern Illinois it's only available at

**Anderson Hospital**  
Maryville, Illinois

**da Vinci Surgery**  
*Less invasive. More precise. Faster recovery.*

[www.davincisurgery.com](http://www.davincisurgery.com)

# connect

## Business of the Month: Marcel Brown Technology Services

Marcel Brown Technology Services was established formally in 1997 as Marcel Brown Internet & Computer Services. In 2002 the company became Marcel Brown Technology Services and joined the Chamber.



Marcel has been a computer geek from age 9. He started out helping his dad's friends and it snowballed from there. After working in the corporate world for many years, Marcel saw the need for small business owners to have the same quality IT expertise that big corporations have. It was also a growing trend at the time for people to have computers in their homes and also need help. Their primary target market is the creative field – graphic designers, photographers, architects, promotional companies, as well as professionals like dentists, doctors and lawyers, and retail store owners. Really, anyone who relies heavily on their technology.

Marcel actually was instrumental in building one of the first ISPs in the area, Intellworld, offered by the Edwardsville Intelligencer back in 1995. He has also built several others for various companies over the years. Marcel has always done troubleshooting and new system set-up, but the important piece of evolving this company is keeping up with the technology itself, and making sure small business owners use it to the fullest extent to save them money and make their companies more productive. In 2002, Danelle joined the company full time to take charge of marketing and promotions.

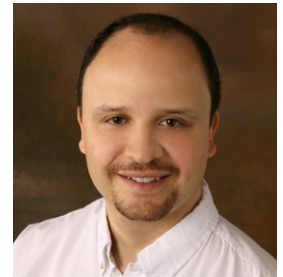
Their core product/service is IT consulting and services for small business owners, home based businesses and individuals in their home, and they provide everything from basic troubleshooting to implementing and maintaining entire systems. Marcel is MCSE certified and holds many certifications for servicing and working with Macs. Marcel and Danelle successfully run the only Independent Apple Retailer in the area with a great track record for both sales and service.

Their mantra: "We are the IT department for people that don't have one," and they're also "the Mac people." They strive every day to help people and businesses use technology to make their lives easier, not harder.

Marcel's most exciting news is the added service of apps development for small business owners in the very near future. As technology changes, so do the needs of companies. In true fashion of the past, Marcel Brown Technology

Services has put together a way for small business owners to have their own apps just like big companies.

Marcel is a member of BNI. Danelle is a member of eWomenNetwork and serves as a board member for the Chamber and Watershed Nature Center.



The biggest benefit of Chamber membership has been getting to know other business owners, not only because it is their target market, but also for the knowledge that they share. "The camaraderie and willingness to help each other is invaluable, as well as all the things that the Chamber can provide that many people don't take advantage of," said Danelle.

Marcel is totally psyched up about delivering apps to small business owners, and Danelle is equally excited about her contribution to the world - her first book coming out in November. *Soulmate Proprietors - How To Run A Business With Your Spouse and STAY Married!*. Something they both know a lot about!

Visit [marcelbrown.com](http://marcelbrown.com) or call 618.580.6256 to learn more.

## Give us the "Opportunity" to build a relationship with you.



Commercial Lenders seated are Brett Bruhn and John Dorsey  
Standing are Brian Ury, Shannon Scheffel, Tim Whitten and Dave Gansner

**Commercial Lending • Merchant Capture • Health Savings Accounts**

**FNB** First National Bank

[www.fnbstaunton.com](http://www.fnbstaunton.com)

Member FDIC • Equal Housing Lender

Staunton 618-635-2234  
Bethalto 618-377-9146  
Holiday Shores 618-656-5015  
Troy 618-667-9800  
Livingston 618-637-2070  
Worden 618-459-7211  
Benld 217-8354384  
Hamel 618-633-2265  
Maryville 618-346-3600  
Mt. Olive 217-999-2265

The Edwardsville/Glen Carbon Chamber  
of Commerce Presents the Seventh Annual



# Meet & Greet

Your Elected Officials

August 23, 2010 4:30–6:30pm

at Glen Carbon Centennial Library

Brought to you by Edwardsville/Glen Carbon Chamber of Commerce  
and the Attorneys of Sandberg Phoenix & von Gontard P.C.

*Please RSVP to 618.656.7600 or complete and return the form  
on the back no later than August 16th. Business casual attire.*

Please reserve \_\_\_\_\_ tickets at \$15 each.

Business Name \_\_\_\_\_

Contact Person \_\_\_\_\_

Business Address \_\_\_\_\_

Business Phone \_\_\_\_\_

Names of Attendees \_\_\_\_\_

I am enclosing a check for \$ \_\_\_\_\_

Please charge my (circle one) MasterCard / VISA

Credit Card # \_\_\_\_\_

Credit Card Expiration Date \_\_\_\_\_

**SANDBERGPHOENIX**  
& VON GONTARD P.C.  
SERIOUSLY UNBELIEVABLE CLIENT SERVICE.®

**edoglen**  
Edwardsville | Glen Carbon  
Chamber of Commerce



## upcoming YPG events

### 9/10 Friday

Golf Lessons with Mike Suhre  
 Oak Brook Golf Club 9157 Fruit Road in Edwardsville

### 9/24 Friday 5:30pm

Meet & Greet Cookout  
 Township Park in Edwardsville

### 10/5 Tuesday 7:30-9:30am

Learn from a Leader Breakfast with Jerry Kane of MCT  
 First Clover Leaf Bank 2143 South IL Route 157 in Edwardsville

### 10/7 Thursday

Wine Education with Len Scaturro  
 Crushed Grapes 1500 Troy Road in Edwardsville

### 11/16 Tuesday 12-1pm

Speed Networking  
 GC Cuisine 1230 University Drive in Edwardsville



ABOVE: Mike Suhre of Oak Brook Golf Club hosted the Young Professionals Group in July for their second round of group golf lessons.

*Illinois Flagship Stations*

**WSMI**

**106.1** **1540**  
 Night Games Day Games

**Mike Niehaus**



**Charlie Huelsmann**

**Edwardsville 618-655-9660**

**www.waox.com**

**www.wsmiradio.com**





## When a stroke left me in a fog, Christian brought my life back into focus.

At Christian Hospital, we're passionate about the health and wellness of our community. In fact, we don't just want to treat conditions like stroke, heart attack and diabetes we want to help prevent them. That's why we've launched a new website full of information, free screening and event schedules – plus even a few surprises:

[ChristianCares.org](http://ChristianCares.org)

Because whether it's helping one neighbor recover from a stroke or helping thousands learn how to avoid one, we're dedicated to improving everyone's quality of life.





# **schmooze**

## **business after hours**



**Gateway Regional Medical Center SW Orthopedics, July 8**



**Gateway Regional Medical Center SW Orthopedics, July 8**



**Gateway Regional Medical Center SW Orthopedics, July 8**



**Lexow Financial Group, July 22**



**Lexow Financial Group, July 22**



**Lexow Financial Group, July 22**

# ribbon cuttings



Comfort Dental, July 21



Abundance Advisors, July 22



Heroic Adventures, August 3

## 5 Ways to See Your Business in *Common Ground*

- 1 Purchase Advertising
- 2 Write an "Ask the Expert" Column
- 3 Submit an Announcement
- 4 Win Our Business of the Month Award
- 5 Come to Chamber Events!

edoglen  
Chamber of Commerce



# your business

## Fitness 4 Life Offers Sports Training for Young Athletes

Playing sports and life in general carries a certain amount of risk for injuries. Injuries can and do happen but the best defense is recognizing potential risk factors and minimizing or avoiding them. Current research states that 50% of all grade school sports injuries are overuse injuries, which are caused from too much stress, placed on muscles, tendons, ligaments, and bones.

Often times well meaning parents and coaches are pushing children and teens too hard and expecting them to perform as if they were college age or professionals. Young bodies do not tolerate high intensity loads or repetitive movements the same as mature individuals. A little goes a long way when training the prepubescent child. Over use, mental or physical, contributes to the 2nd alarming statistic which is 75% of young athletes will not participate in high school sports.

Strength training should be handling their own body weight in functional movement patterns as opposed to body building type workouts. Strengthening the body helps in the prevention of sports and everyday injuries and helps to create a stronger, more effective athlete.

At Fitness4Life Physical Therapy we offer the correct strength training for young athletes.

In September we will be offering classes for ages 8 and older, limited to 4 children per class one time per week to increase strength and speed. For information on training for your young person/athlete, please call 618.656.5433 or e-mail us them [pat@fitness4lifept.com](mailto:pat@fitness4lifept.com). For Information about our clinic visit them online at [www.fitness4lifept.com](http://www.fitness4lifept.com).

Pictured, L to R: Jordan Yenne, Physical Therapist Mark Slaughter, Luke Bowen, Samantha Epenesa, and Mallory Abert.



**Fitness**  
**4**  
**Life** Physical Therapy

**All your protection under one roof.**



**Kathleen M Goclan Agency**  
An Outstanding Customer Experience  
J.D. Power and Associates certified  
Distinguished Insurance Agency  
(618) 659-2483



American Family Mutual Insurance Company and its Subsidiaries  
American Family Insurance Company  
Home Office — Madison, WI 53783  
[amfam.com](http://amfam.com)

© 2009 07497 — Rev. 2/09

### Cherry Hills Properties, Inc.

Locations in Edwardsville & Alton

- 2 & 3 Bedrooms
- Corporate Housing
- Garages Available
- Month-to-Month Leasing Options
- Pets Welcome
- Ask about our specials!



618-692-9310

[www.rentchp.com](http://www.rentchp.com)



**Byron Gerber Petri & Kalb, LLC**  
**ATTORNEYS AT LAW**

**Real Estate Transactions, Contract Review, Estate Planning, Probate Matters, Corporate Formation & Company Matters, & General Litigation**

241 North Main Street  
Edwardsville, Illinois 62025

**Tel: 618.655.0600**  
**314.726.0012**  
**Fax: 618.655.4004**  
**Website: [www.byrongerber.com](http://www.byrongerber.com)**

**Contact:**  
**David J. Gerber**  
**[djg@byrongerber.com](mailto:djg@byrongerber.com)**  
**Christopher W. Byron**  
**Christopher J. Petri**  
**Brian R. Kalb**  
**Micah S. Summers**  
**Meredith L. Head**



## Promote Your Business at SIUE Homecoming 2010

The Southern Illinois University Edwardsville Alumni Association is calling on area businesses to participate in SIUE Homecoming Cougar Fest on Saturday, Oct. 9. A new community festival, SIUE Homecoming Cougar Fest, will take place from 2–4pm at the SIUE soccer fields. Vendors can sell food or merchandise, provide an activity or conduct a register-to-win contest. The event will include live musical performances from three local bands – Aaron Kamm and the One Drops, Sheila Shahpari and Mr. Wizard.

SIUE alumni, students, parents and members of the community will be invited to attend the free event. The day's agenda will include an 11am SIUE Club Sports Football game against Ohio State and a 7pm. men's soccer game against Bradley University.

Interested businesses can purchase a tent for \$90. Additional sponsorship opportunities are available, including a main stage sponsorship and inflatable activities. For more information and to download a registration form, visit [www.siu.edu/homecoming](http://www.siu.edu/homecoming). For more information, contact Katie Bennett, assistant director of SIUE Alumni Affairs, at 618.650.2762.



### Learn QuickBooks. Quick!



New to QuickBooks? Learn what you need to better manage your business in a two-day QuickBooks financial software class at Lewis and Clark.

October 19 & 26

Edwardsville

Class size limited. Call now to enroll! 618.468.5750.

**It's what you know.**



**The Wells Fargo Advisors Edwardsville Rotary Criterium is a fast-paced bike race on the city course of the closed-off streets of Edwardsville, IL on Sunday, September 12, 2010. We close the streets 'cause these racers are crazy.**

# Sept 12, 2010



**Dr. Zhivegas** launches the race September 11, 2010, at the Edwardsville City Park, 7-10 pm with a carbo-loaded party open to the public.

[www.EdwardsvilleCriterium.com](http://www.EdwardsvilleCriterium.com)

# your business

## Girls Softball League an Asset to Community

The GlenEd Sliders, a new select fast-pitch organization based out of Edwardsville/Glen Carbon, are in the process of creating their Board and will be looking for players who can play in the 10,12,14 division. The GlenEd Sliders organization's highest priorities are developing softball fundamentals and exceeding the standards as set forth by our Board.

GlenEd Sliders are excited to be new members of the Ed/Glen Chamber and look forward to working with other local business with similar goals, "providing a reliable service to our community with that will generate a lasting return." For more information, e-mail [glenedsliders@gmail.com](mailto:glenedsliders@gmail.com).



## The Cupcakery: New Space, New Name

Edwardsville's only gourmet cupcake shop, The Cupcakery, has had a busy first year! The team at the Edwardsville shop bakes up



at least nine different flavors of cupcakes every week, along with offering cookies and specialty coffee drinks (and free wi-fi). The Cupcakery has been welcoming crowds of dessert lovers since opening in October 2009 and now they are welcoming a new name.

The Cupcakery officially transitioned their business name to "The Cup" in July, coinciding with the opening of their new store in Springfield, Missouri as well as a newly redesigned Web site ([www.cravethecup.com](http://www.cravethecup.com)). This represents the fourth store in "The Cup" family. For the Edwardsville shop, this name change comes at a perfect time, just as construction is completed on their expanded storefront at University Pointe. A ribbon cutting to celebrate their new space and new name is scheduled at The Cup on August 31 – it's sure to be a SWEET event!

# Mobile Banking!

With Mobile Banking from First Clover Leaf Bank – your information is never far away.

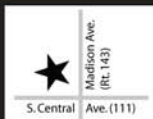
- Balance Inquiry
- Account Activity
- Balance Alerts
- Internet Banking for Smart Phones
- Online Bill Pay
- Balance Transfers

Go online to [www.firstcloverleafbank.com](http://www.firstcloverleafbank.com) or speak to any of our Personal Bankers to sign up for Mobile Banking today!

First Clover Leaf Bank's Mobile Banking Service is a FREE service to you. You must have your account(s) in good standing with First Clover Leaf Bank. You may be charged for Internet and text messaging services through your mobile service provider. Please see a Personal Banker for details or visit us at [www.firstcloverleafbank.com](http://www.firstcloverleafbank.com).



**Goshen Center**  
6814 Goshen Road  
Edwardsville, IL  
656-6122



**Wood River**  
1046 Madison Ave.  
Wood River, IL  
254-8445



**Downtown**  
300 St. Louis Street,  
Edwardsville, IL  
656-6200



**157 Center**  
2143 S. Route 157  
Edwardsville, IL  
692-9900



**First Clover Leaf Bank**™  
We're Better Together.

[www.firstcloverleafbank.com](http://www.firstcloverleafbank.com)





## CICBC Merges

Central Illinois Community Blood Center (CICBC) has merged with Mississippi Valley Regional Blood Center (MVRBC), another not-for-profit community blood center based in Davenport, Iowa. When they announced their intention to join forces last May, they headlined their news release, "A Perfect Match" because they believe this merger of two well-respected Midwestern blood providers will help them maintain and even improve their level of service to communities long into the future.

In most of the communities they serve, they will continue to operate as CICBC. While they will operate with the same staff as before, they are taking on the new name in the Illinois suburbs of the Metro East region to leverage the marketing efforts and name recognition MVRBC has begun to establish through its presence in communities on the Missouri side of the river. They are delighted that they can now serve the St. Louis market on both sides of the river!

They are excited about the opportunities the merger will bring and are pleased to let donors know they will continue to serve local hospitals with the same Donor Recruitment and Mobile Blood Drive staff you've always known. Their schedule of upcoming blood drives remains unchanged. Visit [www.CICBC.org](http://www.CICBC.org) to find a blood drive in your area.

## Gateway Regional Employees Give Back

A group of Gateway Regional Medical Center (GRMC) employees gathered to paint a local house in Granite City on Saturday, July 10. Volunteers put two coats of paint on the house, doors and window trim, replaced guttering and beautified the property. In addition, Gateway Regional's medical staff donated \$2500 in support of this community service project.

The program was organized by Rebuilding Together\*Madison County, Inc ([www.rebuildmadco.com](http://www.rebuildmadco.com)), a local organization that rehabilitates the houses of low-income homeowners, particularly the elderly and disabled, so that they can live safely and independently.

"We are excited to have had the opportunity to partner with such a neat organization and to be able to do good work for members of our community," said Kate Allaria, Director of Public Relations at GRMC. "The group of employees who turned out to help us give back made a big difference in these people's lives. This is a great example of the kind of people we have working at Gateway Regional, and I'm proud to work with them."



**Wells Fargo Advisors  
EDWARDSVILLE  
ROTARY  
CRITERIUM**

*The Wells Fargo Advisors Edwardsville Rotary Criterium is a fast-paced bike race on the city course of the closed-off streets of Edwardsville, IL on Sunday, September 12, 2010. We close the streets 'cause these racers are crazy.*

**Why shouldn't the launch party be just as wild?**

**Dr. Zhivegas**

**Sept 11, 2010**

[www.EdwardsvilleCriterium.com](http://www.EdwardsvilleCriterium.com)

**Edwardsville City Park / 7:00 p.m.-10:00 p.m. / Carbo-load Dinner / Beer & Wine / Open to the Public**

# Get Your News ANYWHERE



E-edition Now Available

## NO MORE: E-edition Rates

- ✓ Waiting for the carrier
  - ✓ Living outside our delivery area
  - ✓ Billing confusion
  - ✓ Wet or lost newspapers
  - ✓ Guilt for non-EcoFriendly practices
- Call 656.4700**

4 Weeks - \$4.99  
12 Weeks - \$14.99  
24 Weeks - \$29.99  
48 Weeks - \$49.99

Covering Edwardsville & Glen Carbon Businesses Since 1862

the <sup>Edwardsville</sup>Intelligencer

## MONEY MAILER® of the Metro East

- Shared Mail Product
- Solo (1 to 1) Mailings
- New Move and Loyalty Programs
- Variable Data Postcards and Letter Mailings
- Demographic Lists
- Graphic Design



- Promotional Flyers, Pamphlets and Business Cards
- 4 Color Printing
- On Line Advertising

**866-282-4298**

[www.moneymailer.com](http://www.moneymailer.com)



Mike Goodsell, Owner

A Combat Veteran Owned Business



Advertisement. The choice of a lawyer is an important decision and should not be based solely upon advertisements.

## SANDBERG PHOENIX & VON GONTARD P.C.

SERIOUSLY UNBELIEVABLE CLIENT SERVICE.®

Edwardsville, IL Carbondale, IL St. Louis, MO

A law firm that offers clients a service guarantee? What's next?

As hard as it may be to believe, some law firms actually go out of their way to offer clients timely, responsive and cost effective legal services. We should know. We've been offering exactly that kind of service for the last 30 years. In fact, we don't just offer it, we guarantee it.

To learn more about our practice in Business, Business Litigation, Health Law and Products Liability, visit [SandbergPhoenix.com](http://SandbergPhoenix.com).

Contact our Edwardsville office at:  
(618) 659-9861



# your business

## Pro-Am Bicycle Race Coming to Edwardsville

Speeding is not normally allowed in Downtown Edwardsville, but on Sunday, September 12, it will be encouraged. Not for motorists, but for the hundreds of professional and amateur bicyclists that will descend on Main Street for the first ever Wells Fargo Advisors Edwardsville Rotary Criterium, a pro-am bicycle race held on the streets of Downtown Edwardsville.

The race is part of a two-day event that is open to the public and hosted by the Rotary Club of Edwardsville. The festivities will begin on Saturday, September 11, 2010 with a "Criterium Kick-Off" held at Edwardsville's City Park. The Kick-Off will feature live music from regional favorite Dr. Zhivegas, a pasta dinner, as well as wine and beer sales. On Sunday, September 12, eight separate races for cyclists of varying skill levels will take place, beginning at 8:30am and ending at approximately 6pm. A "Kids Race" for children ages 3 to 14 begins at 12:15pm. The Kids Race will be divided into four separate categories based on age.

The Rotary Club of Edwardsville is hosting the Criterium as both a fund-raiser and a signature event for the City of Edwardsville and the Rotary. Edwardsville residents SJ Morrison and Jay Blanquart are serving as Race Coordinators. The Edwardsville Rotary Criterium will feature a \$10,000 purse, the largest

one-day pay-out for a pro-am bicycle race in the Metro East and the second largest in the entire St. Louis region.

"On behalf of the Rotary Club I am excited to bring this event to the City of Edwardsville and the entire region," said Jay Blanquart, incoming Edwardsville Rotary President. "The Criterium will not only raise funds for community-enhancing projects that Rotary supports, it will also serve as a signature event for the Edwardsville area."

Businesses, organizations and individuals who would like to be a sponsor can contact Blanquart at 618.799.8888 for more information. In addition to sponsors, event coordinators are seeking volunteers from the community to serve as marshals for the various races. Individuals who are interested in volunteering can contact Morrison at 618.558.3062. Details are also posted on-line at [www.edwardsvillecriterium.com](http://www.edwardsvillecriterium.com) and on Facebook.

Major sponsorships have already been received from Wells Fargo Advisors, the City of Edwardsville, Lifetouch Photography, the Goddard School, Richards Brick Company, TheBANK of Edwardsville and the Metro East Park & Recreation District.

"The tremendous support that we've received from the Rotary Club, the Edwardsville business owners, the City of Edwardsville and the Edwardsville Police Department has allowed us to plan a first-class event for both the community and the cyclists," said Morrison, who serves as Race Director. "Professional bike races are exciting, family-friendly events that draw spectators of all ages."





**LOS TRES AMIGOS**  
Joe Morales  
**RESTAURANT**  
MEXICAN RESTAURANT

Birthday Parties  
Dine In  
Take Out  
Gift Certificates

**1011 Century Drive  
University Point 2  
Edwardsville, IL 62025**

**618-659-4880**

Sun - Thurs: 11 am to 10 pm  
Fri - Sat: 11 am to 10:30 pm

**CharterMedia**  
Targeted Advertising Solutions

**BIG IMPACT...affordable price**

Lori James ♦ 618-622-2545  
[lori.james@chartercom.com](mailto:lori.james@chartercom.com)



and more

**PICKING FRIENDS IS EASY**

Picking an insurance plan should be easy too

When there's so much out there, making the best choice can be frustrating. At Hortica, our insurance experts will guide you through the process of choosing the best insurance plan for your family or business that will meet your needs and keep you on budget. How **EASY** is that?

Home • Auto • Business • Life • Health  
[www.hortica-agency.com](http://www.hortica-agency.com)  
#1 Horticultural Lane • Edwardsville, IL 62025  
618.656.4088



**WHO KNEW?**

**hortica**  
INSURANCE & EMPLOYEE BENEFITS  
More going on here than you think.

# your business

## Regions Celebrates Opening of New Branch

Regions Bank is happy to announce the opening of their new Glen Carbon – Meridian banking location. Rob Pickerell will lead the branch as Branch Manager. The new Meridian branch is located at 2120 Illinois 157.

Regions' newest branch will bring the bank's Greater St Louis branch total to 68. The new branch is a full-service office with specialists in wealth management, consumer, small business and commercial banking and mortgage lending.

Additional information about Regions and its full line of products and services can be found at [www.regions.com](http://www.regions.com).



## 2nd Annual Tri at the Y Mini Triathlon

The Edwardsville YMCA is gearing up for the 2nd Annual Tri at the Y Mini Triathlon! After a successful first year event the YMCA is looking for additional sponsors to help support their financial assistance fund. This year's event will take place on Sunday, October 3.



Interested sponsors may choose from a range of sponsorship levels and receive benefits including, but not limited to logo placement on event signage, T-shirts, our Web site, product give away allowance and more. To inquire about a sponsorship please contact Lacey Sonderegger, Marketing Coordinator at the Esic facility, at 618.656.0436. Let's all Tri together and make Edwardsville YMCA programs an option for all children!

## Eden Village WINE TASTING 2nd Annual



Friday, September 17 from 6-8pm  
200 South Station Road, Glen Carbon (in the Atrium)

**\$25 Advance Ticket / \$30 At Event**

Call 618.205.4637 for Tickets

Price Includes Wine & Beer Tasting, Hors d'oeuvres & Music

Wine Tasting Provided by Crushed Grapes  
Music Provided by Hospice of Southern Illinois

## Louer Facility Planning Adds Interior Designer

Louer Facility Planning, Inc. is pleased to announce that Becky Long has joined the company in the position of Interior Designer. She will be responsible for space planning, furniture specification, finish selection and project management.

Prior to joining Louer, Ms. Long worked with Hobbs + Black Architects in Ann Arbor, Michigan where she was responsible for space planning, 3D design work, construction documents and research in sustainability. Ms. Long is LEED AP in New Construction and holds a degree in Interior Design from Southern Illinois University Carbondale. She is currently working toward accumulating the necessary experience to take the National Council for Interior Design Qualification certification exam. "The core purpose of NCIDQ is to protect the health, life safety and welfare of the public by establishing standards of competence in the practice of interior design."

Louer Facility Planning has an office and showroom located in Collinsville, at 1604 Eastport Plaza Drive, Suite 100. Call 618.344.9610 to arrange for product demonstrations or go to [www.louerplan.com](http://www.louerplan.com) for more information.

### AN ADDED MEMBER BENEFIT

As a member of

**EDWARDSVILLE/  
GLEN CARBON  
CHAMBER OF  
COMMERCE**

**YOU'LL SAVE BIG!**

**Southern Illinois  
Underwriters Agency, Inc.**

P.O. Box 463  
105 Plaza Court  
Edwardsville, Illinois 62025  
618-656-0120  
C. William Schmidt • Matt Rogier

We are pleased to offer special discount rates from Auto-Owners Insurance Company on business insurance — to members of company approved organizations like yours!

Fast, fair and efficient service — from The "No Problem" People®

**CALL TODAY AND SEE  
HOW YOU'LL SAVE!**

***Auto-Owners Insurance***

Life Home Car Business  
*The "No Problem" People®*

## 4th Annual Juvenile Diabetes Fundraiser

**Friday, September 10  
4pm–??**

**at Crushed Grapes**  
1500 Troy Road in Edwardsville  
618.659.3530

**\$15 Per Person**

Includes Wine Tasting,  
Beer, Soda, Food, Music,  
& Much Rejoicing!



**JDRF** Juvenile  
Diabetes  
Research  
Foundation  
International

All proceeds go to the Juvenile Diabetes  
Research Foundation's "Walk to Cure Diabetes"



*Arlene & Len Scaturro*

*"It's all about  
the wine."*



**Save the Date**  
Wine Tasting Every Friday Night  
at Crushed Grapes from 5–8pm

**CRUSHED GRAPES ltd.**

wines – spirits – beers – gourmet foods – gifts

1500 Troy Road | Edwardsville, IL 62025  
618.659.3530 | [www.crushedgrapesltd.com](http://www.crushedgrapesltd.com)



# your business

## Wildey Theatre to Renovate with T-Shirts

If all it took to restore the Wildey Theatre was a T-shirt, would you help out? That is exactly what Silkworm is doing for a recognizable landmark in Edwardsville, Illinois. Beginning Saturday, July 9th, locations throughout the Metro East region will be selling T-shirts to raise money to purchase auditorium chandeliers and to restore the Wildey ticket booth at the Wildey Theatre. The T-shirts sell for just \$15 each and all proceeds go to Friends of the Wildey. "Silkworm is dedicated to helping the Southern Illinois community," said Sam Bell, Senior Marketing Coordinator at Silkworm, "The Wildey is such a beautiful building, I for one can't wait to go see a show there."



The T-shirt fundraiser program by Silkworm has been a very successful program in Southern Illinois. The program has raised thousands of dollars for a number of organizations and historic sites in the area.

"The Friends of the Wildey are pleased to partner with Silkworm for this first

trial fundraising effort," said Rich Walker, Chair of the Wildey Development Committee, "This small first step will allow everyone in the community to get involved and support the Wildey renovation effort and get a nice piece of memorabilia at the same time."

The Wildey is owned by the City of Edwardsville. T-shirts can be purchased at: Market Basket, Edge Bank, Beyond Timbuktu, Annies, The Bank of Edwardsville, Crushed Grapes, YMCA, Edwardsville Library, Edwardsville City Hall, and on line at [www.wildeytheatre.com](http://www.wildeytheatre.com). Contact Rich Walker at 618.650.3158, 618.656.1856 or [rwalker@siue.edu](mailto:rwalker@siue.edu).

A concert to benefit the Wildey Theatre renovation will take place on Thursday, September 16 at the Edwardsville High School Auditorium. The concert will feature students from the EHS Fine Arts Department performing music from movies shown at the Wildey. The evening will also include clips of the movies and a guest narrator who has been the usher at the Wildey for the past 100 years! Featured films include, The Big Chill, Rocky, Star Wars, The Blues Brothers, The Pink Panther, Psycho, and more. Tickets are \$20 and are available at the Edwardsville Parks Department, the Edwardsville Library, or by calling 692.7538.



### LILLEY AND ASSOCIATES, INC. OFFERING LIMITED MEDICAL PLAN

#### FOR EDWARDSVILLE/GLEN CARBON CHAMBER MEMBERS

**Lilley and Associates, Inc. is introducing a Limited Medical Insurance Plan for Chamber members. This plan includes hospital and office visits, prescription drug coverage, maternity coverage, and a vision discount program. There are no minimum requirements for number of hours your employee must work, nor is there a requirement for minimum number of participating employees. Please call or email us today for more details on the plan, which features:**

- **Guarantee Issue (no eligible employee can be turned down for coverage)**
- **Maternity coverage is included from day one**
- **\$10,000 Accidental Death Benefit**
- **Vision Discount Program (provided through National Vision Administrators)**
- **Discount Prescription Drug Coverage (provided through CatalystRx)**
- **HIPAA Compliant**

---

2110 Troy Road • Suite C • Edwardsville, IL 62025  
(618) 655-0550 • (314) 961-7558 • (314) 440-1006 Cell  
[jlilley@lilleyandassociates.com](mailto:jlilley@lilleyandassociates.com) • [www.lilleyandassociates.com](http://www.lilleyandassociates.com)





# It's our Birthday!

Royal Solutions, LLC has been helping Small & Medium Businesses leverage emerging technologies to grow their bottom line for the past 10 years!

Please join us for our Birthday celebration when we host the Business After Hours on September 30th.

Where: 200 University Park Drive • Suite 260

When: 5:00 PM to 7:00 PM



*IT Services for Small Business*

**Microsoft®**  
**GOLD CERTIFIED**  
*Partner*

200 University Park Drive • Suite 260 | Edwardsville, Illinois 62025 | (618) 307.9191

# your business

## Grace Manor Restaurant Announces Upcoming Dinners, Release of New Web Site

Grace Manor Restaurant, located in the historic building at 1801 North Main Street in Edwardsville, has announced their calendar of upcoming events. This month, Grace Manor will have two exciting events that celebrate the flavors of the season as well as the flavors of Schlafly Beer and Mt. Pleasant wines.

Join them for the Schlafly Summer Beer Dinner on August 14 to taste a variety of Schlafly beers with a five course dinner. On August 28 you can enjoy several different wines and a five course dinner at Grace Manor's Mt. Pleasant Estates Wine Dinner.

There will be a person seated at each table for these dinners to answer questions about how the beer and wine are produced. You won't want to miss either of these very special evenings.

The Schlafly Summer Beer Dinner is \$50 per person and includes a five course dinner paired with Schlafly beer, tax and gratuity. Diners will enjoy gazpacho shots, fresh corn salad on fried cornbread cake, BLT pasta salad

with fresh farm bacon and sungold tomatoes, stuffed chicken breasts, fried peach pie, and a variety of Schlafly beers.

The Mt. Pleasant Estates Wine Dinner is \$75 per person and includes sparkling wine reception, five course dinner, tax and gratuity. Menu items include mixed fruit salad, spicy cucumber salad, mushroom pasta, pork tenderloin stuffed with cherries and onion, salted chocolates over brioche bread, and expertly paired Mt. Pleasant wines.

Call Grace Manor Restaurant at 618.655.0650 to reserve your place at the table for either event.

Grace Manor also recently unveiled their new Web site – visit them online at [www.gracemanorrestaurant.com](http://www.gracemanorrestaurant.com) to learn more about Grace Manor, browse the menu, find out about daily specials and special events, and to view a list of Grace Manor's vendors.

SOUTHERN ILLINOIS UNIVERSITY  
**EDWARDSVILLE**

"All of my decisions are driven by what is best for my students."

***That's the power of***



Small class sizes and personal attention are just two of the reasons our students choose Southern Illinois University Edwardsville. Our teacher-scholar model puts student learning first. So professors are focused on the same thing our students are – their education. When students trust their futures to SIUE, you can trust that we'll be dedicated to their aspirations. It's just one more way the **e** equals excellence.

***Learn more about the power of e. Call 800-447-SIUE or log on to [siue.edu](http://siue.edu).***



## Golf Tournaments

Edwardsville/Glen Carbon Chamber of Commerce will hold its Annual Golf Challenge Monday, October 4 at Sunset Hills Country Club. Watch future e-mail, postcard and newsletter communications for more information.

St. John's Community Care will hold a four person flighted golf scramble Friday, August 27 at Arlington Greens in Collinsville. The fee is \$75 per person and sponsorships are available. Visit [www.eldercareandmore.net](http://www.eldercareandmore.net) or call 618.344.0276 to register.

Edwardsville Rotary Club will hold a four person golf scramble Friday, August 20 at Oak Brook Golf Club. The fee is \$100 per person. Call Doug at 618.659.9193 or e-mail him at [douglasrohrer@sbcglobal.net](mailto:douglasrohrer@sbcglobal.net) to register.

## Edwardsville/Glen Carbon Mini-Storage

**1/2 OFF THROUGH OCTOBER 2010!**

**NEW 3000+ Square Foot Space Available!**



Convenient Location at 270 & 157  
24/7 Access with Security Cameras  
New Units Available from 5x5 to 10x30  
Climate Controlled Units – Fenced & Lighted  
Paved with Masonry Construction  
Personal & Business Accounts  
Chamber Member Discounts  
We Accept Deliveries



**CALL 618.655.0900 FOR DETAILS**

Professional assistance can save you time and money!

**Kuhlmann**  
BUSINESS SERVICES



**Linda Kuhlmann**  
Accountant/QuickBooks ProAdvisor  
618.830-2272

**[www.kuhlmannservices.com](http://www.kuhlmannservices.com)**



**ASSURANCE BROKERS LTD.**

Construction Bonds/Commercial Insurance  
Life/Health/Auto/Home

**Venessa van Schalkwyk**  
Licensed Insurance Agent

95 North Research Drive  
Suite 100  
Edwardsville, IL 62025

Office: 800-556-2663  
618-692-9800  
Fax: 618-692-9865

Email: [venessa@assurancebrokers.com](mailto:venessa@assurancebrokers.com)

**CLICK!**  
**You're a member!**



Apply for  
membership and  
open new accounts  
online today!



**myGCScu.com**

Membership restrictions apply. This credit union is federally insured by the National Credit Union Administration.



Our  
orthopedic  
quality  
doesn't end  
in the  
operating  
room.



*The Bone & Joint Center at Gateway Regional.*

At The Bone & Joint Center, we offer advanced surgical options for joint replacement, performed by an experienced team of surgeons from Illinois SW Orthopedics, Ltd. But we don't stop there. After your procedure, you'll be taken to one of our newly remodeled private recovery rooms, with new beds, comfortable seating and flat screen TVs. Plus, you'll be cared for by our specially trained staff of dedicated, experienced nurses who are personally invested in your health and well-being. We're here to take exceptional care of your orthopedic condition, while taking better care of you. Visit [gatewayregional.net](http://gatewayregional.net) or call (618) 798-3000.



Find-A-Physician (618) 798-8888