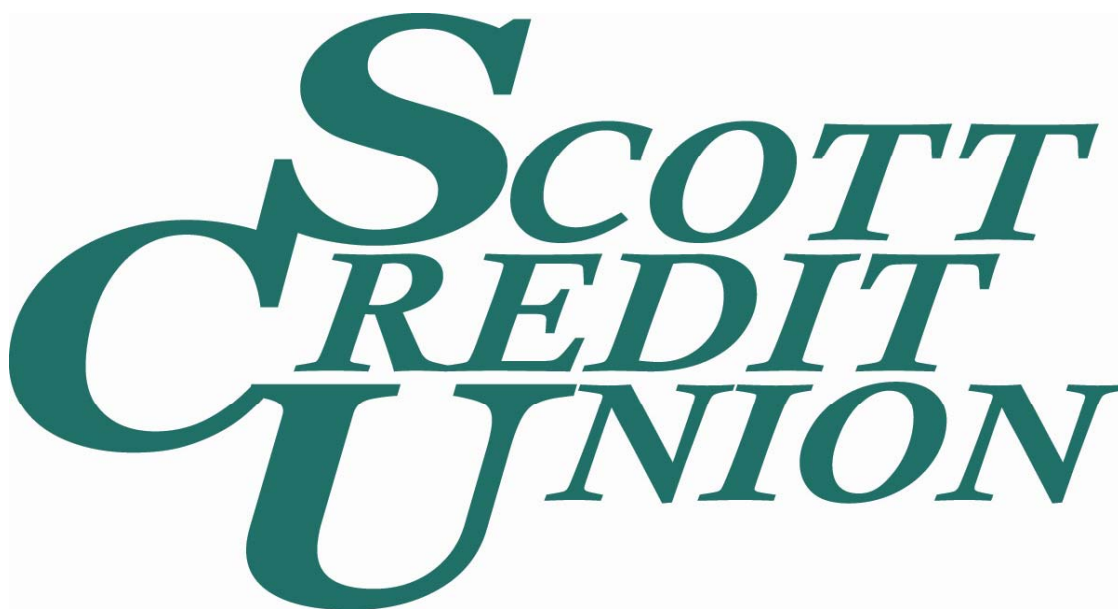


**The 2012 Mayors' Breakfast is brought to you by the
Edwardsville/Glen Carbon Chamber of Commerce
Government Affairs Committee**

and



Village of Glen Carbon 2012



Development

Annie's frozen custard



IHOP Restaurant



Wooden Nickel Bar & Grill



54th Street



WALMART EXPANSION



Sam's Club



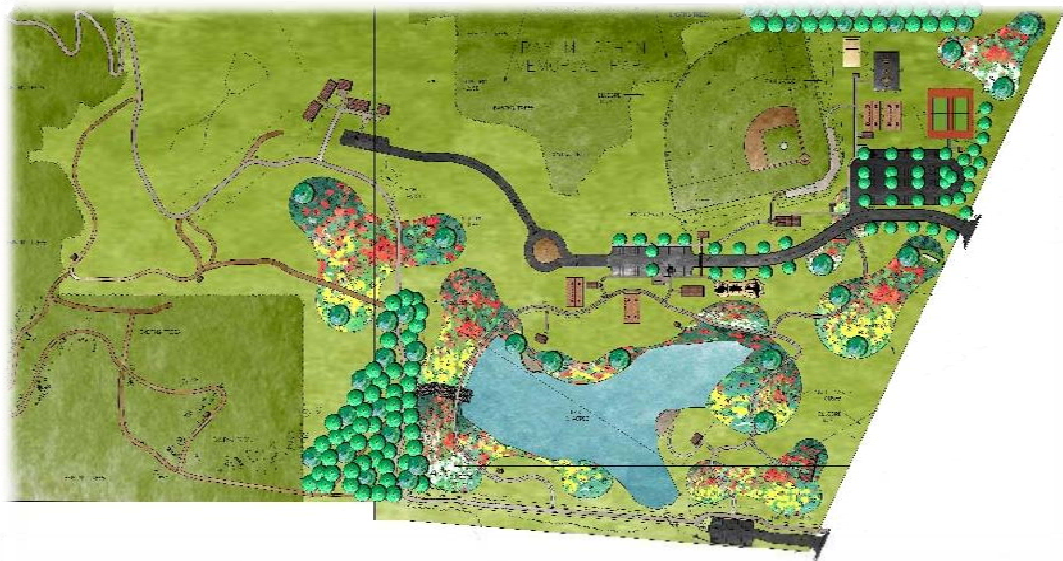


Capital Projects

Miner Park ~ Bark Park



Schon Park



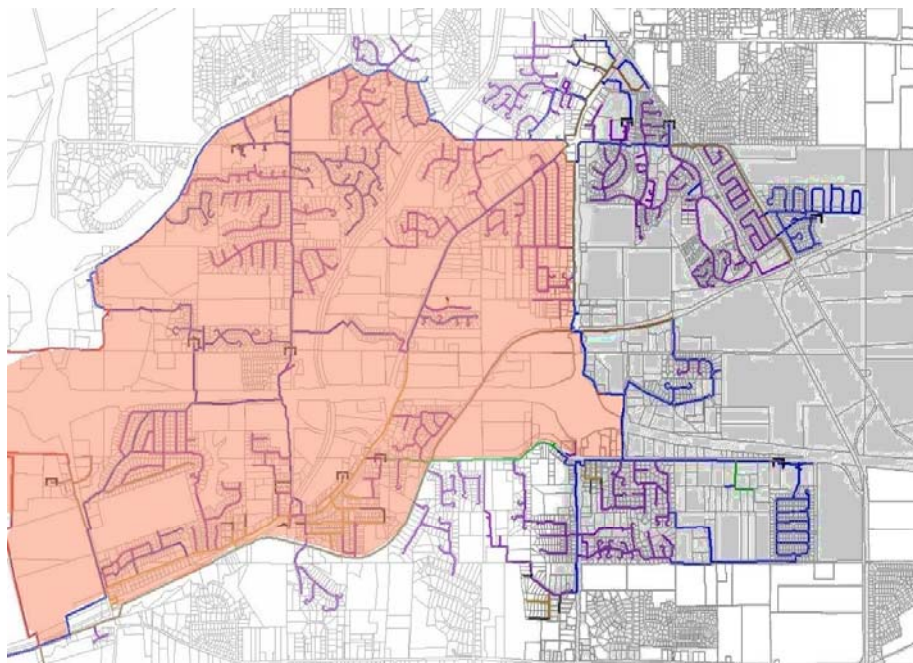
Acme school pocket park



Sewer Project



WATER SYSTEM IMPROVEMENT



Village of Glen Carbon

April 19, 2012





FamilyCircle

One of America's Ten Best Cities for Families



History of Sales Tax Income

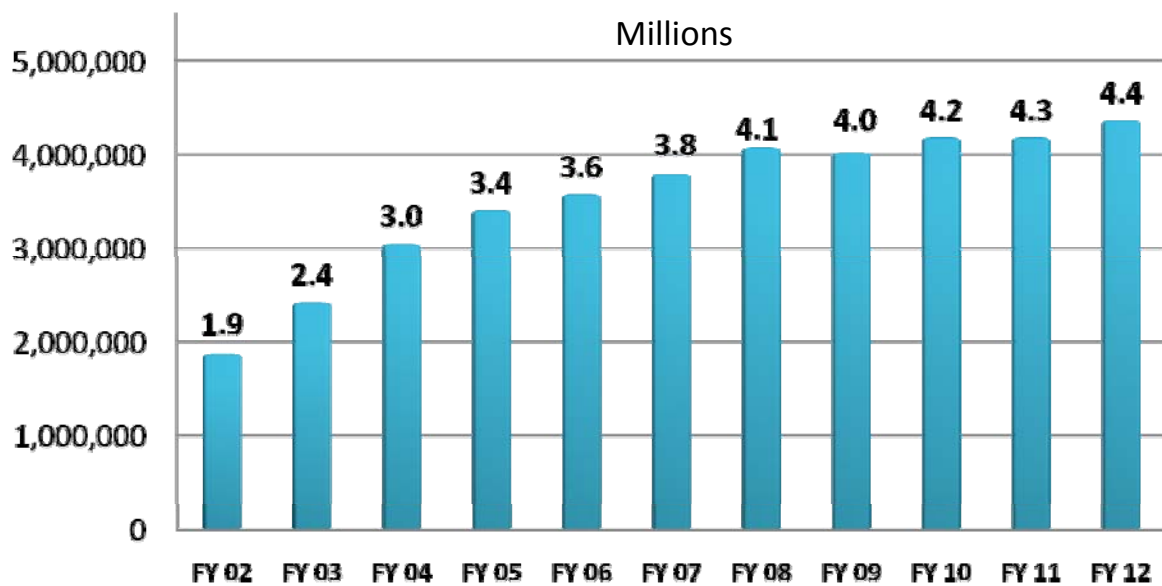
December Sales Tax Income Comparison

Public Sector Commercial Investment

Private Sector Commercial Investment

Street & Infrastructure Improvement

Sales Tax History

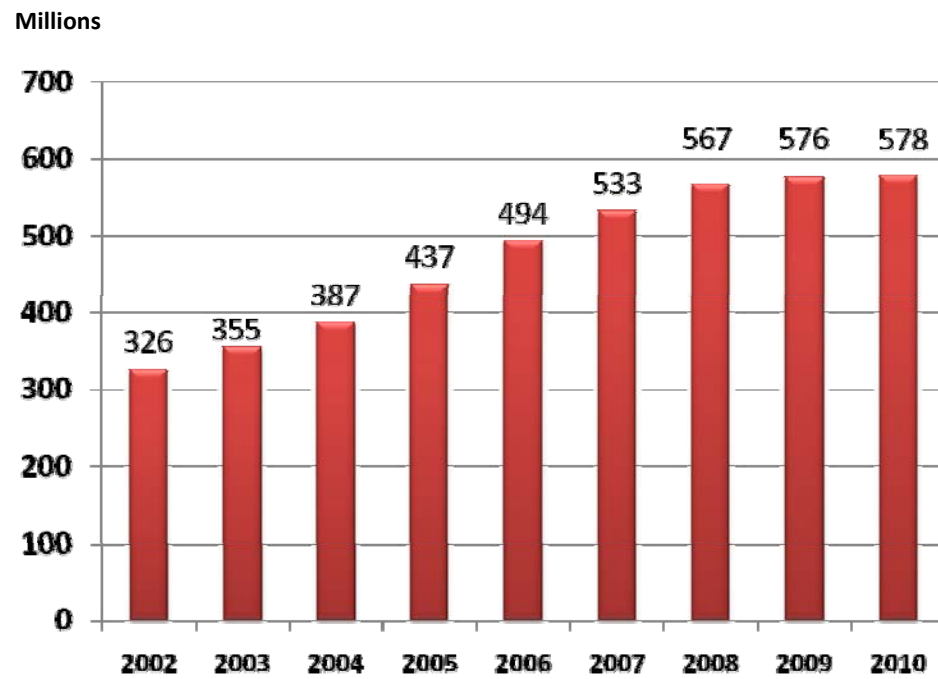


**Sales Tax Income Comparison
December 2008 - 2011**

2008	\$392,457
2009	\$406,943
2010	\$434,007
2011	\$450,892

December 2011 sales tax income was the highest income producing sales tax month in the history of the city.

City of Edwardsville Assessed Valuation History





Pure Prairie League and Brewer and Shipley April 16, 2011



Wishbone Ash May 14, 2011



Wildey Event Recap April 2011 – March 2012

Total Attendance 27,522

Movies	209
Live Music Concerts	45
Rentals	45
Benefit Events	11
Free Events	20

SIUE – Science Building



SIUE - Art & Design Building



Leclaire Junction



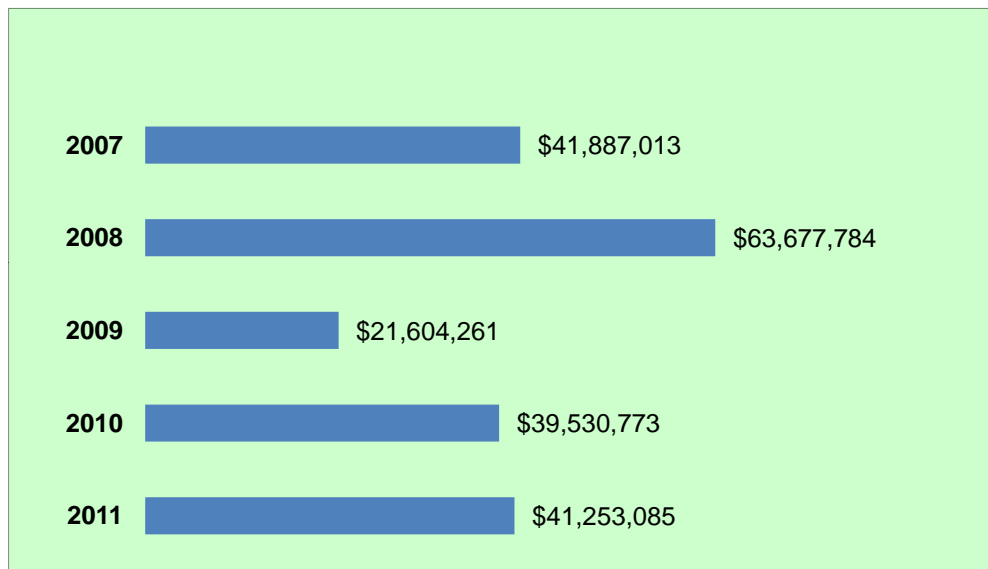
Leclaire Junction



Commercial Permits January 2011 – March 2012

Project Address	Business Name	Estimated Value
101 Credit Union Way	Scott Credit Union	\$10,500,000.00
1063 State Rt. 157	Enclave Development	\$7,682,864.00
28 Gateway Commerce Ctr.	Walgreens-Phase 2	\$4,776,773.50
28 Gateway Commerce Ctr.	Walgreens-Phase 1	\$4,560,773.50
3049 Westway Drive	P & G	\$1,627,200.00
2350 Troy Road	Target Store	\$1,540,856.00
2120 Troy Road	Kohl's Store	\$1,315,000.00
6305 Center Grove Rd-1	Metro East Lutheran	\$1,104,813.00
1254 University	Northwestern Mutual	\$812,000.00
6697 Center Grove Road	F.O.R. Corporation (Old Wonder Bread)	\$765,820.00
112 E Vandalia	Dewey's Pizza	\$600,000.00
2477 S State Rt 157	Edison's Entertainment Complex	\$528,000.00
3049 Westway Drive	Contegra-Water Tank & Fire Pump	\$331,000.00
	Total All 60 Commercial Permits	\$37,927,665.94

Dollar Values of Construction



Edwardsville Corporate Centre



Edwardsville Corporate Centre Hortica



Scott Credit Union Headquarters



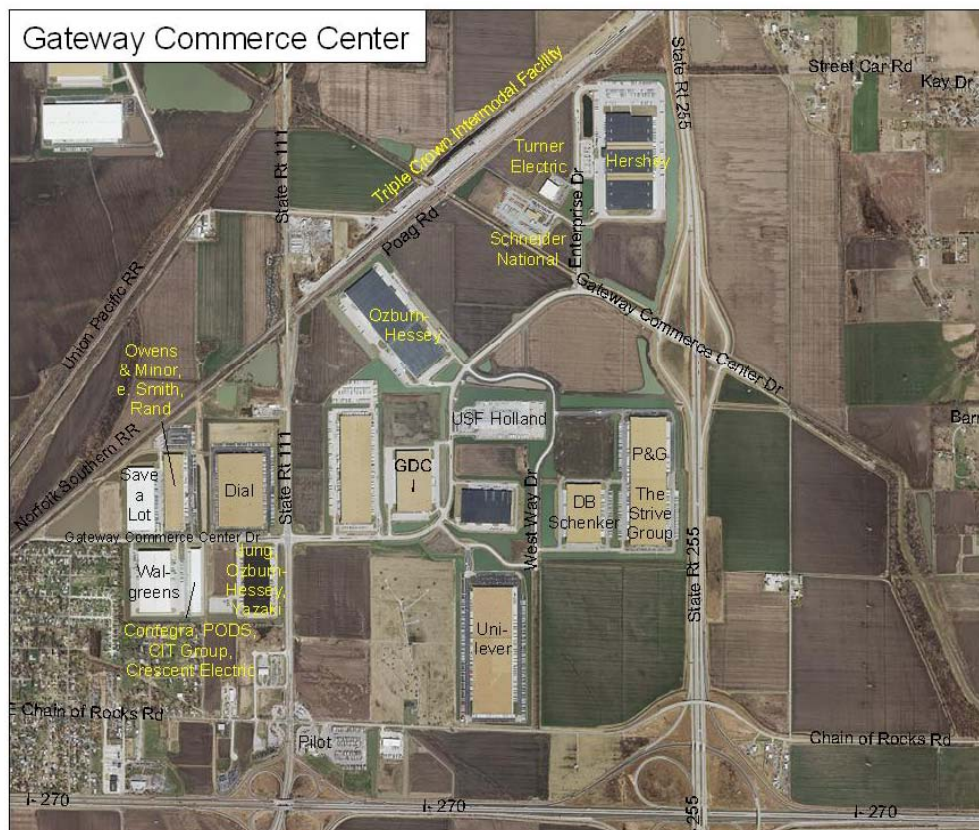
A NEW CORPORATE HEADQUARTERS
SCOTT CREDIT UNION
EDWARDSVILLE ILLINOIS

ACI BOLAND
ARCHITECTS PLANNERS INTERIOR DESIGNERS

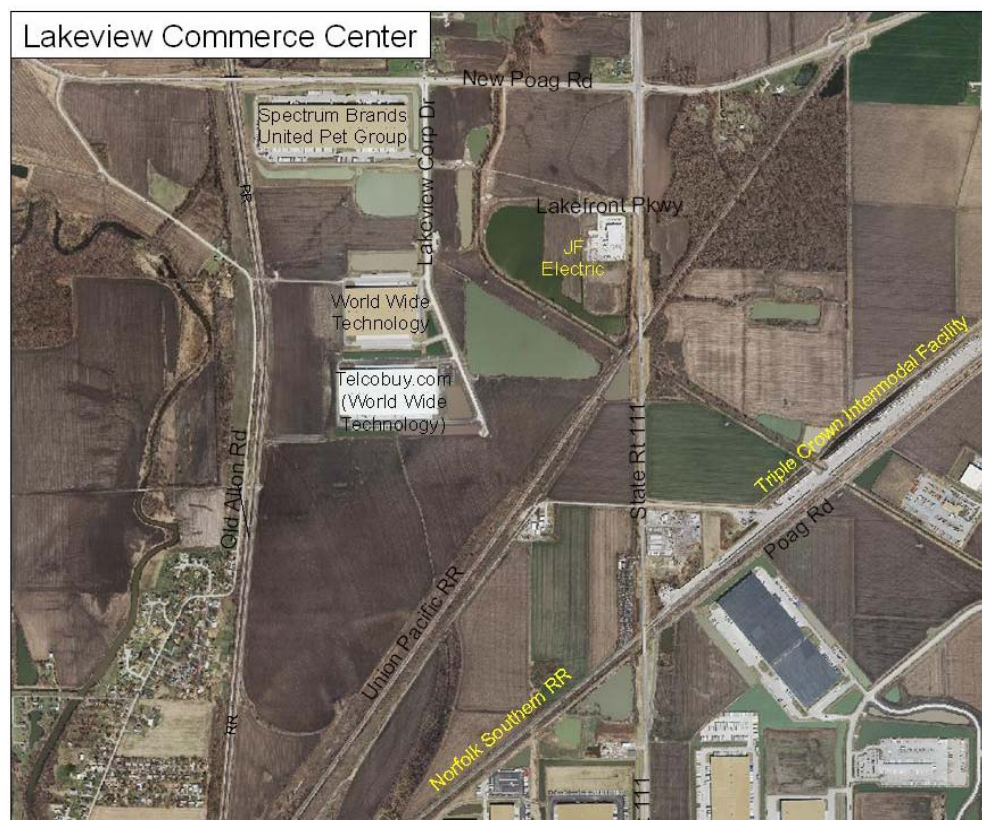
Scott Credit Union April 2012



Gateway Commerce Center



Lakeview Commerce Center



Park Plaza Phase III Completed in 2011



Dewey's Pizza



The Enclave - Architect's Rendering



The Enclave



Edison's Entertainment Complex



Cedarhurst of Edwardsville



lenitygroup

Plum Creek



Schwarz Street

Before



After



Randle Street

Before



After



Sherman Avenue

Before



After



Liberty Street

Before



After



N. Main St. Northbound F to 4th





Overview

- ❖ Sales tax income continues to trend upward increasing from \$4.1 million in 2008 to \$4.4 million in 2011
- ❖ State income tax has declined from \$ 2.2 million in 2008 to \$1.7 in 2011
- ❖ State of Illinois continues to be four to five months behind (\$500,000) in distributing income tax revenue
- ❖ Commercial, retail and private sector investment continues
- ❖ Aggressive annual capital improvement plan continues to address street and infrastructure
- ❖ The city continues to have a balanced budget consistent with historical record
- ❖ Even through difficult financial times the city's general fund reserve has grown

**The 2012 Mayors' Breakfast is brought to you by the
Edwardsville/Glen Carbon Chamber of Commerce
Government Affairs Committee**

and

